

30 *Sesbania sesban* (Linn.) Merr. (Jayanti)

Drug consists of dried leaf and pod of *Sesbania sesban* (Linn.) Merr. (syn. *S. aegyptiaca* Pers.) (A, B & C); Fam. Fabaceae. A fast growing shrub, found in plains throughout the country up to an altitude of 1200 m.



A. Flowering and fruiting
twig



B. Dried leaves



C. Dried pods and seeds

Sesbania sesban (Linn.) Merr.

Chemical Constituents

Major

Pod

Kaempferol trisaccharide.

Leaf

Chikusetsusaponin IVa

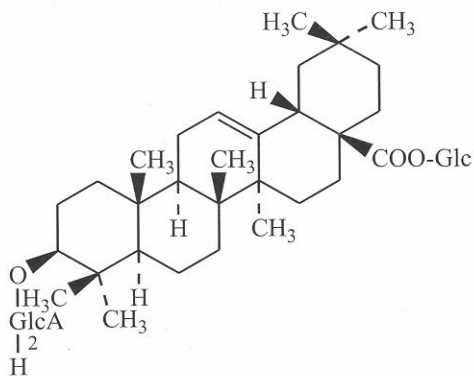
Others

Pod

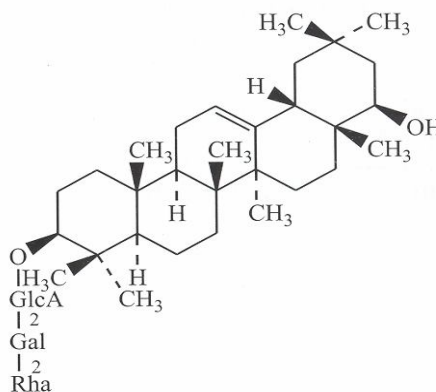
Lupeol, α -amyrin; galactomannan; stigmasta-5, 24(28)-diene-3 β -O- β -D-galactopyranoside, cholesterol, campesterol, β -sitosterol; linoleic, linolenic, oleic, palmitic, stearic acids, lignoceric acid

Leaf

3-O-[α -L-rhamnopyranosyl-(1 \rightarrow 3)- β -D-glucuronopyranosyl]-oleanolic acid, β -D-glucopyranosyl 3-O-[α -L-rhamnopyranosyl-(1 \rightarrow 3)- β -D-glucopyranosyl]-oleanolate, β -D-glucopyranosyl 3-O-[(β -D-glucopyranosyl-(1 \rightarrow 2)-O-[α -L-rhamnopyranosyl-(1 \rightarrow 3)])]- β -D-glucopyranosyl]-oleanolate, ilexoside XLVIII₃, lablaboside A, kaikasaponin III; cholesterol, campesterol, β -sitosterol.

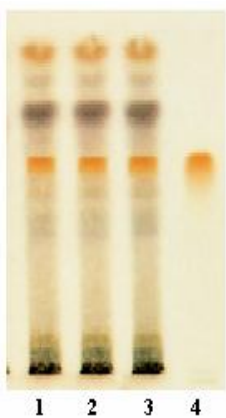


Chikusetsusaponin

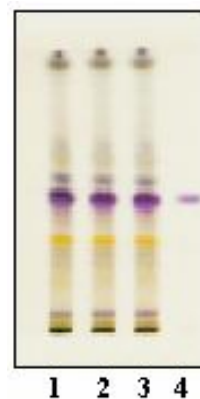


Kaikasaponin III

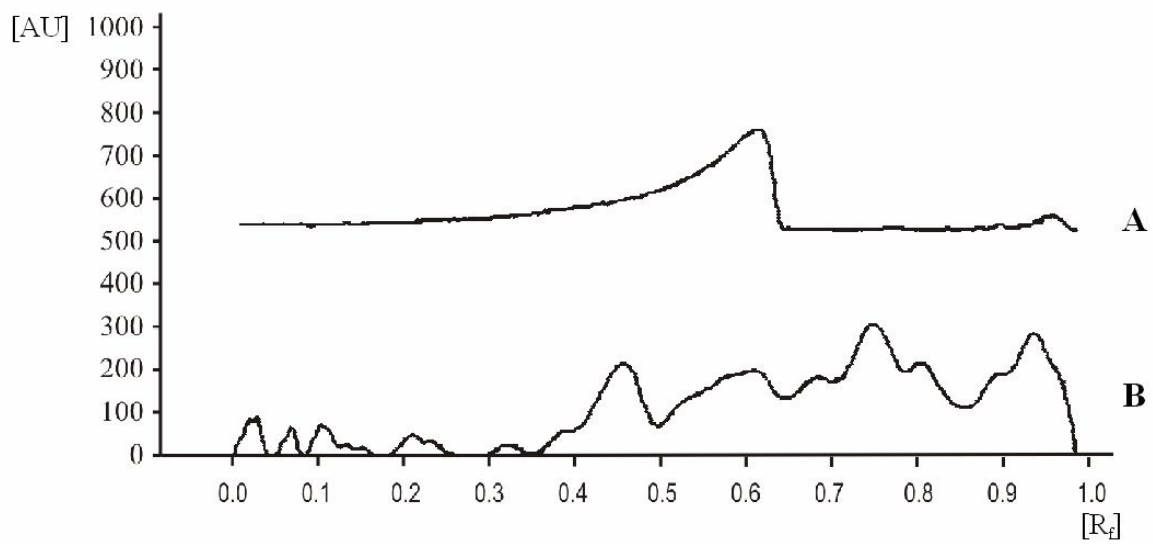
TLC/HPTLC Details



TLC profile of chloroform extract of *Sesbania sesban* pod. **1-3**: Test solution; **4**: Kaempferol standard.



TLC profile of chloroform extract of *Sesbania sesban* leaf **1-3**: Test solution; **4**: Oleanolic acid standard.



HPTLC densitometric scan at 254 nm. **A.** Kaempferol standard; **B.** Test solution of *Sesbania sesban* pod.