

## 30 *Nelumbo nucifera* Gaertn. (Kamala)

Drug consists of dried flower of *Nelumbo nucifera* Gaertn. (syn. *Nelumbium speciosum* Willd.); Fam. Nymphaeaceae. A large, aquatic herb with submerged rhizome, occurring throughout warmer parts of India up to an altitude of 1500 m.



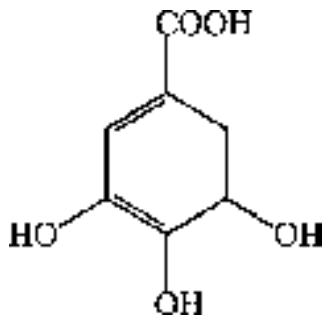
Flower

*Nelumbo nucifera* Gaertn.

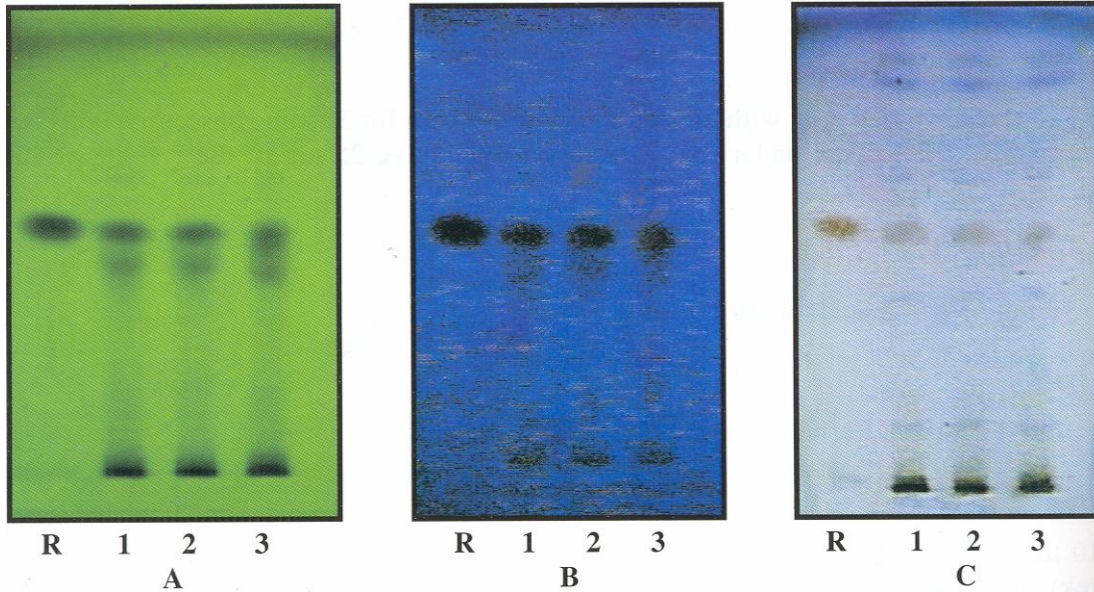
### Chemical Constituents

#### Major

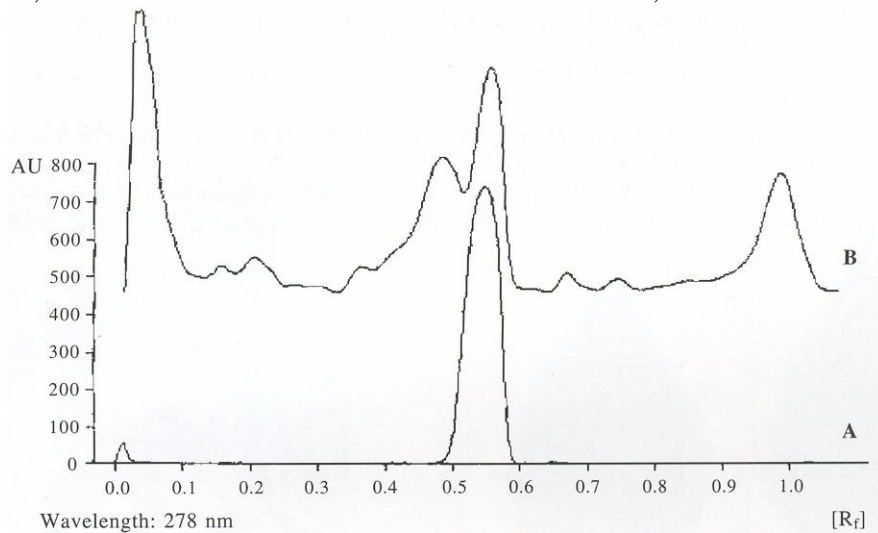
Gallic acid isolated first time from the flowers as major component.



Gallic acid



TLC profile of the test solution of *Nelumbo nucifera* flower. **A.** UV 254 nm; **B.** UV 366 nm; **C.** After derivatization. **R:** Gallic acid standard; **1-3:** Test solution.



TLC densitometric scan at **278 nm**. **A.** Gallic acid standard; **B.** Test solution of *Nelumbo nucifera* flower.