

### 3 *Ailanthus triphysa* (Dennst.) Alston

The drug consists of dried stem bark of *Ailanthus triphysa* (Dennst.) Alston (syn. *A. malabarica* DC.) (A & B); Fam. Simaroubaceae. A large tree, found in the evergreen forests of Western Ghats from Konkan southwards.



A. Plant



B. Dried stem bark

a. Outer surface

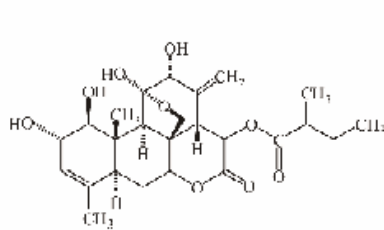
b. Inner surface

*Ailanthus triphysa* (Dennst.) Alston

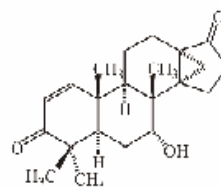
### Chemical Constituents

#### Major

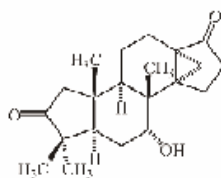
13,18-Dehydroexcelsin.



13,18-Dehydroexcelsin

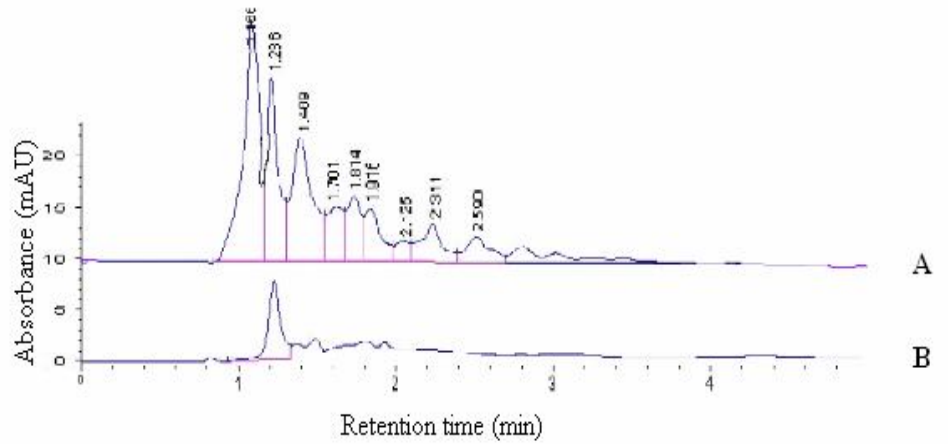
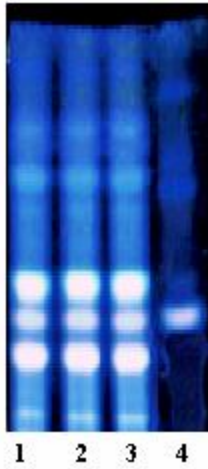


Malabanone A



Malabanone B

## TLC/HPLC Details



TLC profile of test solution of *Ailanthus triphysa* stem bark. **1-3:** Test solution; **4:** 13,18-Dehydroexcelsin standard.

HPLC chromatogram. **A.** Test solution of *Ailanthus triphysa* stem bark; **B.** 13,18-Dehydroexcelsin standard.