

2 | *Aristolochia indica* Linn. (Īśvarī)

The drug consists of dried root of *Aristolochia indica* Linn.¹ (Plate 2.1 A & B); Fam. Aristolochiaceae. The plant is a perennial twining shrub, found throughout North India, in plains and lower hills and in peninsular region including Western Ghats, up to 900 m.

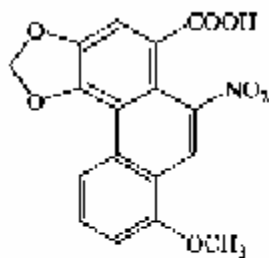


A. Plant

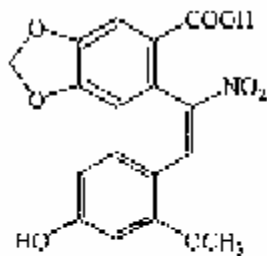


B. Root

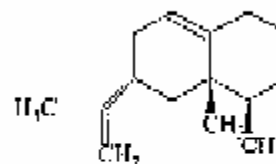
Plate 2.1 *Aristolochia indica* Linn.



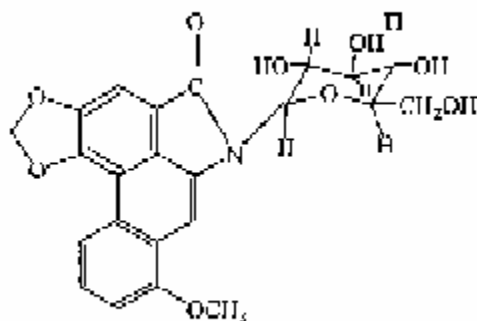
Aristolochic acid - I
(Aristolochic acid)



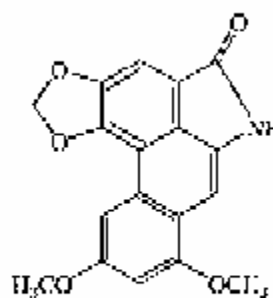
Aristolochic acid - D
(Aristolochic acid IVa)



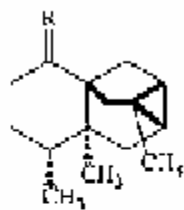
Aristolochene



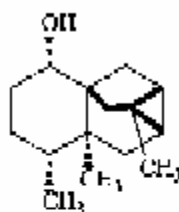
Aristolochinamide β -D-glucoside



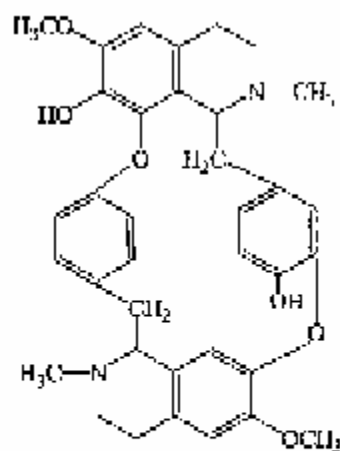
Aristolochic acid-D methyl ether lactam



R - D₂ Ishwaranol
R - C Ishwarone



Ishwarone



Aristolochinone

