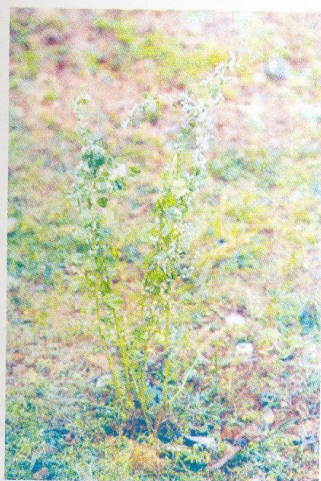


2 | *Aerva lanata* (Linn.) Juss.  
(Pāṣāṇabheda)

Drug consists of dried whole plant of *Aerva lanata* (Linn.) Juss. (Plate 2.1 A & B); Fam. Amaranthaceae. The plant is much branched, erect or occasionally prostrate herb, 30-60 cm high, pubescent when young, distributed throughout plains of India in wastelands.



A. Plant



B. Dried whole plant

Plate 2.1 *Aerva lanata* (Linn.) Juss.

**Chemical**

**Constituents**

**Major**

$\beta$ -Sitosterol<sup>1,2,3,4</sup>,  $\alpha$ -amyrin<sup>2,4</sup>, betulin, hentriacontane<sup>4</sup>.

**TLC Identity Test**

