

2 *Acanthus ilicifolius* Linn.

The drug consists of leaf of *Acanthus ilicifolius* Linn. (A & B); Fam. Acanthaceae. A gregarious shrub, commonly found with mangroves along the coastal regions of India.



A. A flowering twig



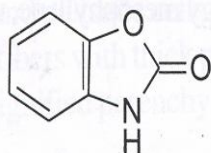
B. Leaves 2cm

Acanthus ilicifolius Linn.

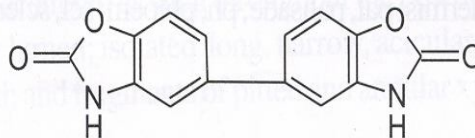
Chemical Constituents

Major

Sitosterol; 2-benzoxazolinone, 5,5'-bis-benzoxazolinone-2,2'-dione.



2-Benzoxazolinone

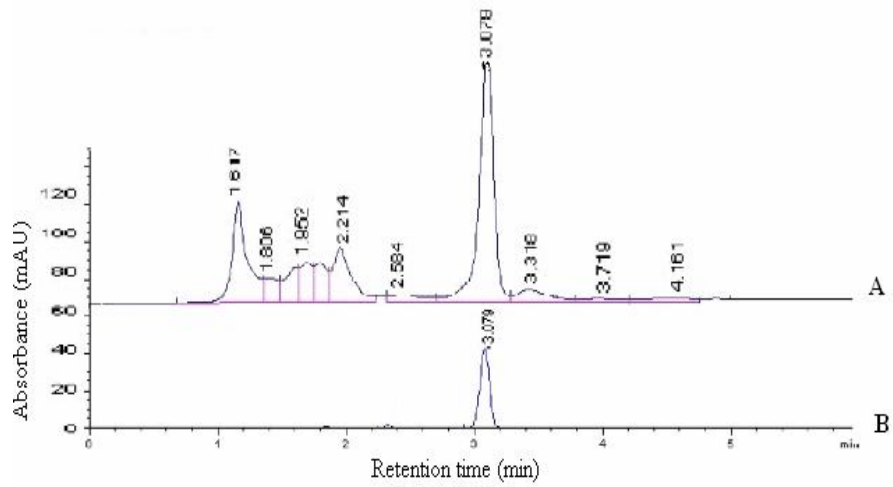


5,5'-bis-Benzoxazolinone-2,2'-dione

TLC/HPLC Details



TLC profile of test solution of *Acanthus ilicifolius* leaf. **1-3** :Test solution ; **4** : 2-Benzoxazolinone standard.



HPLC chromatogram. **A**. Test solution of *Acanthus ilicifolius* leaf. **B**. 2-Benzoxazolinone standard.