

29 *Taxus wallichiana* Zucc. (Sthaubeyka)

Drug consists of dried leaves of *Taxus wallichiana* Zucc. (A & B) (syn. *T. baccata* auct. non Linn.); Fam. Taxaceae. It is a small to medium sized evergreen tree and is distributed in temperate Himalayas, altitude 1800 to 3350 m and Khasia hills, altitude 1000 to 1200 m¹.



A. Flowering branch

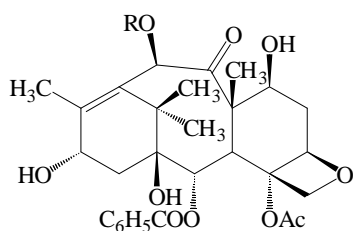
B. Dried leaves (needles)

Taxus wallichiana Zucc

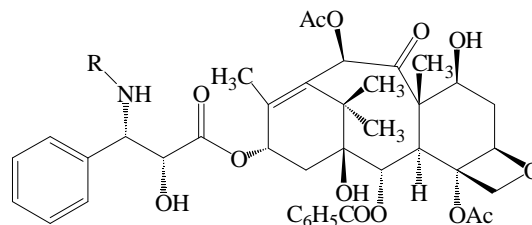
Chemical Constituents

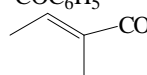
Major

10-Deacetylbaccatin III², baccatin III³, taxol² and cephalomannine⁴ belonging to taxane series. Taxoids are a group of diterpenoids and over 40 of them have been isolated from the needles belonging to taxane, abeotaxane or 3,11-cyclotaxane series. The taxoid content of the needles shows wide variations attributable to geographical sources and season of collection^{5,6}.



10-Deacetylbaccatin III R = H
Baccatin III R = COCH₃

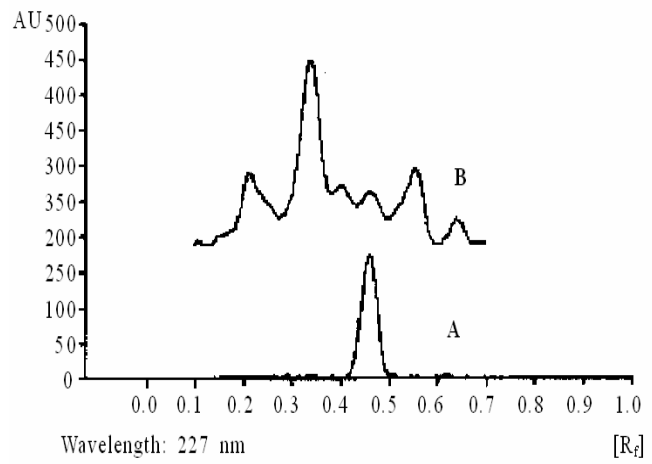


Taxol R = COC₆H₅
Cephalomannine R = 

TLC/ HPLC Details



TLC profile of test solution of *Taxus wallichiana* needle extract.
1: Paclitaxel standard;
2: Test solution.



TLC densitometric scan at 227 nm.
A. Paclitaxel standard; **B.** Test solution of *Taxus wallichiana* needle extract.