

29 *Momordica charantia* Linn. (Karavellaka)

Drug consists of fresh fruit of *Momordica charantia* Linn. (A & B); Fam. Cucurbitaceae. It is a monoecious, herbaceous climber cultivated throughout India up to an altitude of 1500 m.



A. Flowering and fruiting twig



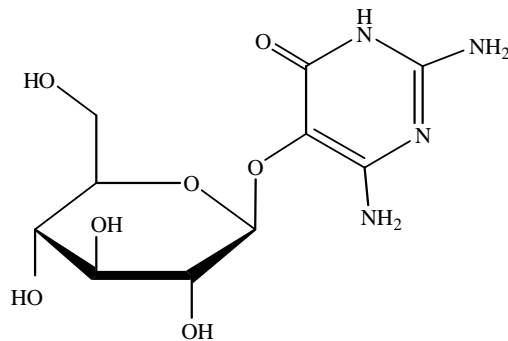
B. Fresh fruit

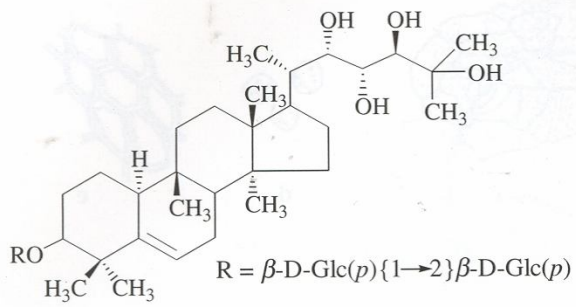
Momordica charantia Linn.

Chemical Constituents

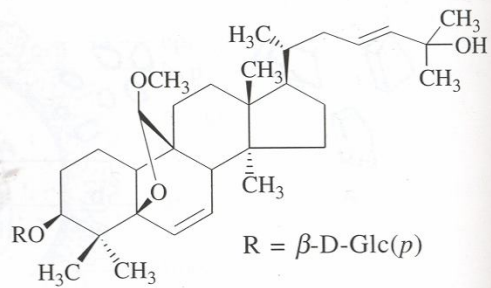
Major

Charantin (1:1 mixture of stigmastadienol β -D-glucoside and β -sitosterol β -D-glucoside)¹, β -sitosterol β -D-glucoside², momordicosides A and B (cucurbitane type)³, vicine a non protein nitrogenous base⁴.

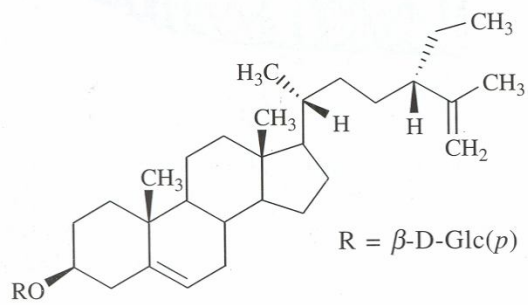




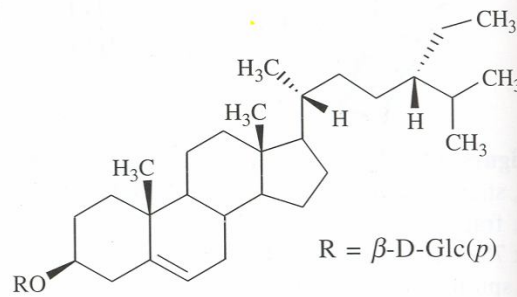
Momordicoside A



Goyaglycoside-a



$\Delta^{5,25}$ Stigmastadienol 3 β -D-glucoside



β -Sitosterol β -D-glucoside

TLC Details

