

29 *Sesamum indicum* Linn.

(Tila)

Drug consists of dried seed of *Sesamum indicum* Linn. (A,B & C); Fam. Pedaliaceae. It is an erect, pubescent, annual herb growing up to 90 cm in height and cultivated throughout the country in plains up to an altitude of 1200 m.



A. Flowering twig



B. Fruiting twig

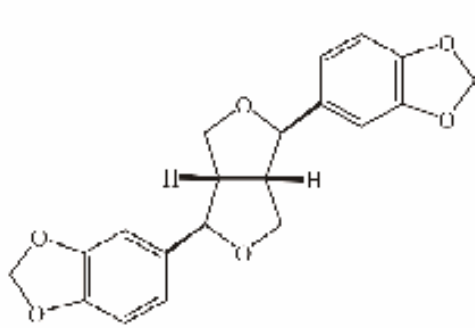


C. Seeds

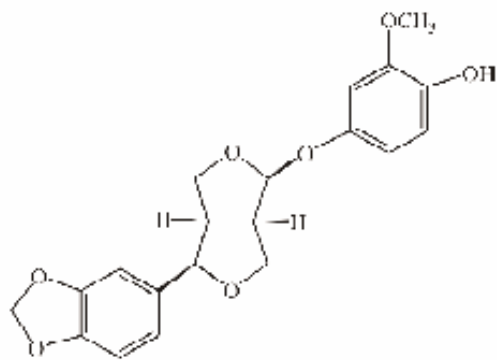
Chemical Constituents

Major

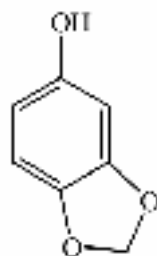
Sesamolin, sesamin, sesamolinal, sesamolinal diglucoside.



Sesamin

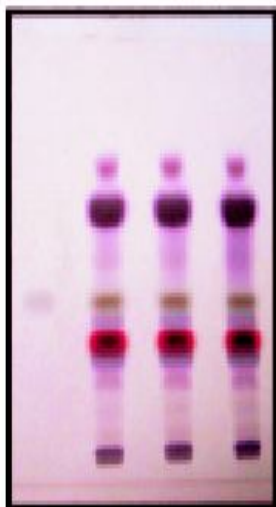


Sesamolinol



Sesamol

TLC/GLC Details

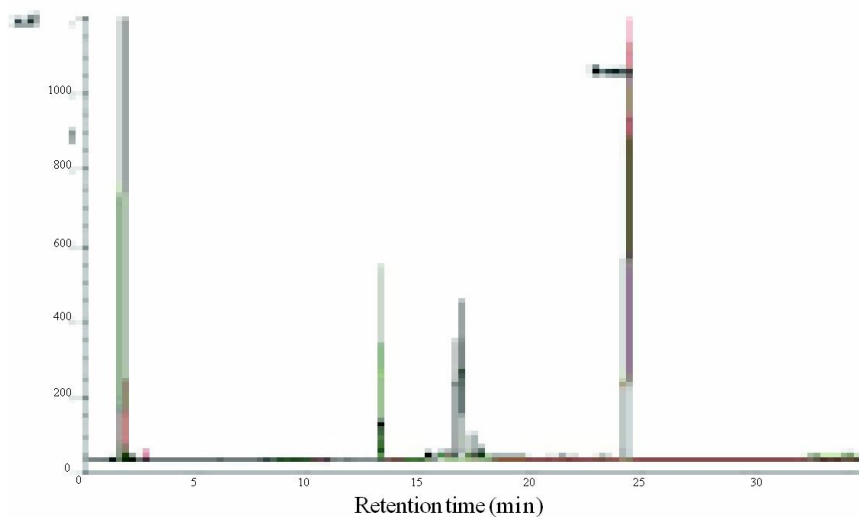


1 2 3 4

TLC profile of *n*-hexane extract of the seed of *Sesamum indicum*.

1: Sesamin standard;
2-4: Test solution.

TLC profile of *n*



GLC fingerprint profile of *Sesamum indicum* fixed oil. hexane extract of the seed of *Sesamum indicum*.