

28 *Streblus asper* Lour. (Sakhota)

Drug consists of dried stem bark of *Streblus asper* Lour. (A & B); Fam. Moraceae. An evergreen, tree up to 15 m high. It is distributed from Himachal Pradesh to West Bengal and in hills and plains of Assam and Tripura, also occurs in peninsular India up to 600 m, and in the Andamans.



A. Plant



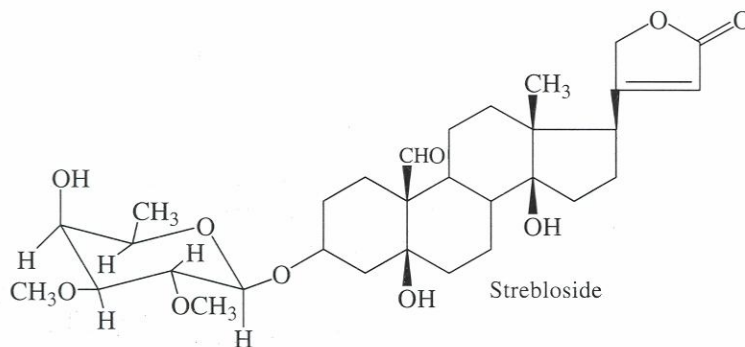
B. Stem bark
a. Outer surface; b. Inner surface

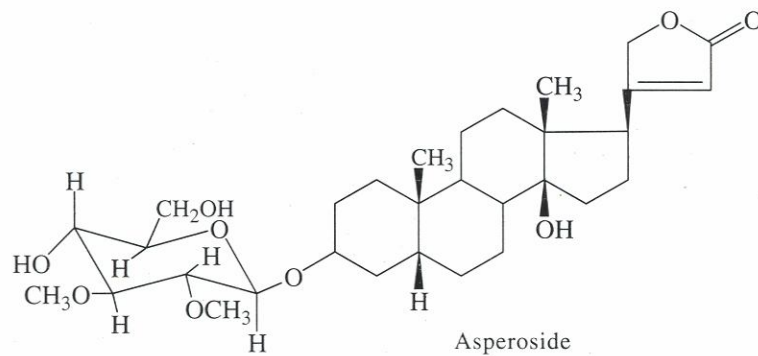
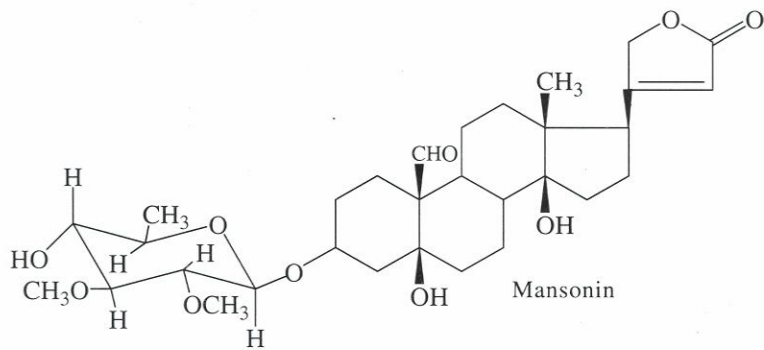
Streblus asper Lour.

Chemical Constituents

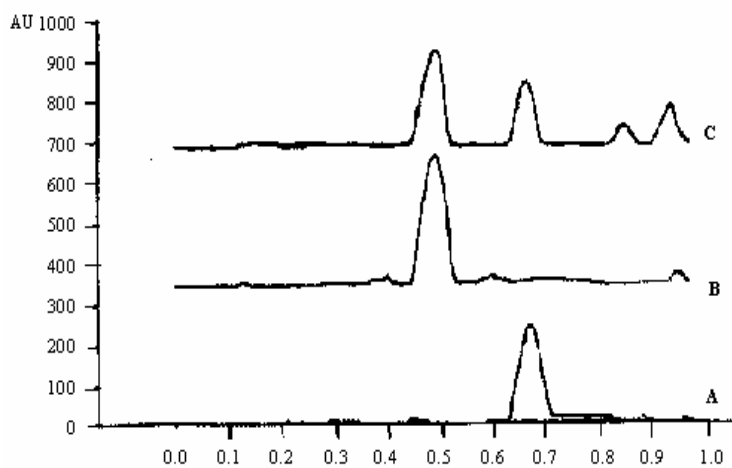
Major

Strebloside, asperoside, mansonin





TLC/ HPLC Details



Wavelength: 479 nm

[R.]

TLC profile of test solution of *Streblus asper* stem bark extract.

ASP: Asperoside;
ST: Strebloside standard;
1-3: Test solutions.

TLC densitometric scan at 470 nm.

A. Asperoside standard; **B.** Strebloside standard;
C. Test solution of *Streblus asper* stem bark extract after derivatization with ceric sulphate reagent.