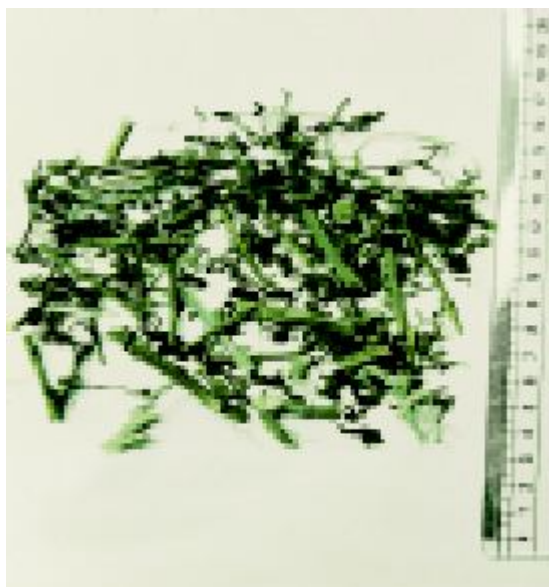


## 28 *Solanum villosum* Mill. ssp. *villosum* Edmonds (Kakamaci)

Drug consists of the whole plant of *Solanum villosum* Mill. ssp. *villosum* Edmonds (syn. *S. nigrum* sensu Clarke, p. p., non Linn.) (A & B); Fam. Solanaceae. An erect annual herb, up to 30 to 45 cm high; distributed as weed throughout India up to an elevation of 2100 m.



A. Fruiting twig



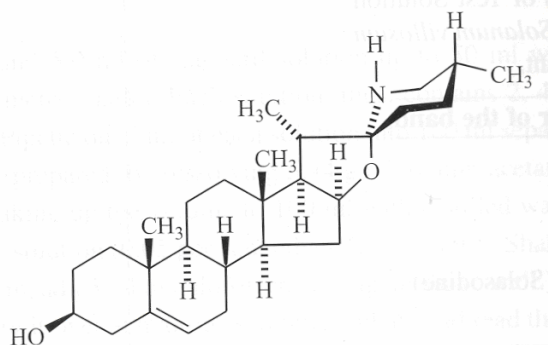
B. Dried whole plant

*Solanum villosum* Mill. ssp. *villosum* Edmonds

### Chemical Constituents

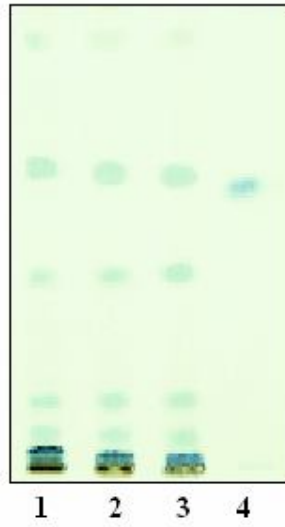
#### Major

Solasonine, solamargine; solasodine.



Solasodine

## TLC Details



TLC profile of test solution of ethanol extract of *Solanum villosum* ssp. *villosum* whole plant. **1-3:** Test solution; **4:** Solasodine standard.