

28 *Sarcostemma acidum* (Roxb.) Voigt (Somavalli)

Drug consists of dried stem of *Sarcostemma acidum* (Roxb.) Voigt (syn. *S. brevistigma* Wight & Arn.) (A & B); Fam. Asclepiadaceae. A straggling shrub with pointed stem, found in warmer dry parts of India.



A. A flowering twig

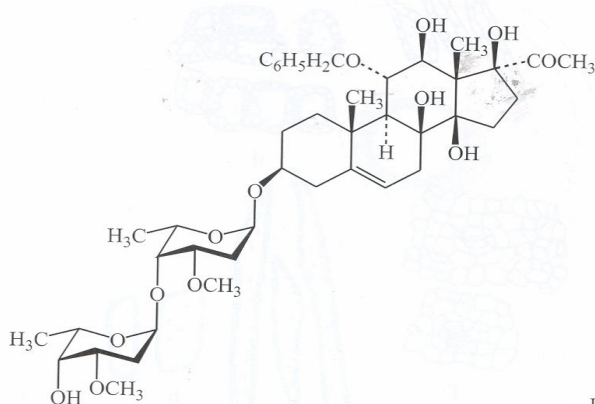


B. Dried stem pieces

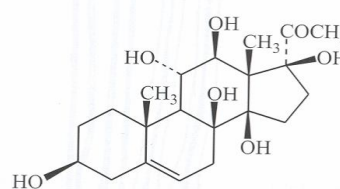
Chemical Constituents

Major

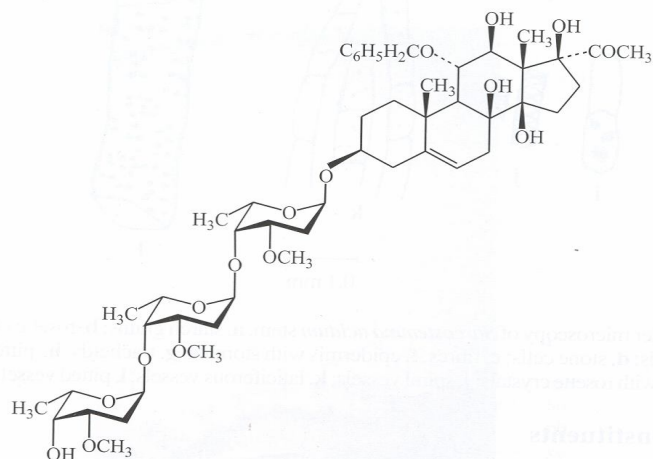
Sarcogenin.



Brevinine

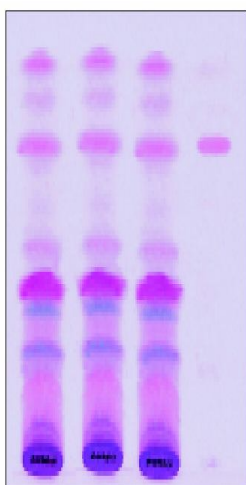


Sarcogenin

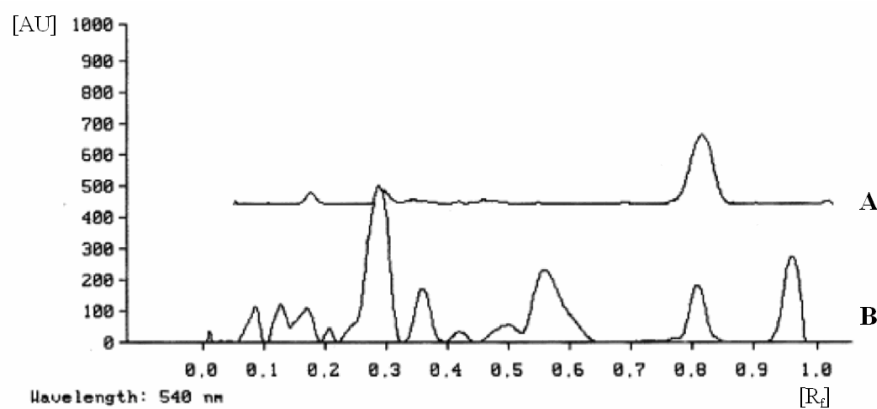


Brevine

TLC/HPTLC Details



1 2 3 4
 TLC profile of chloroform extract of *Sarcostemma acidum* stem. **1-3:** Test solution; **4:** Lupeol acetate standard.



HPTLC densitometric scan at 520 nm. **A.** Lupeol acetate standard; **B.** Test solution of *Sarcostemma acidum* stem.