

27 *Silybum marianum* (Linn.) Gaertn.

Drug consists of dried ripe fruit of *Silybum marianum* (Linn.) Gaertn. (A & B); Fam. Asteraceae. The plant is an annual herb native to southern Europe, Asia Minor and Egypt. In India, it is distributed from N. W. Himalayas up to an altitude of 2400 m from Kashmir to Uttaranchal¹.



A. Flowering plant



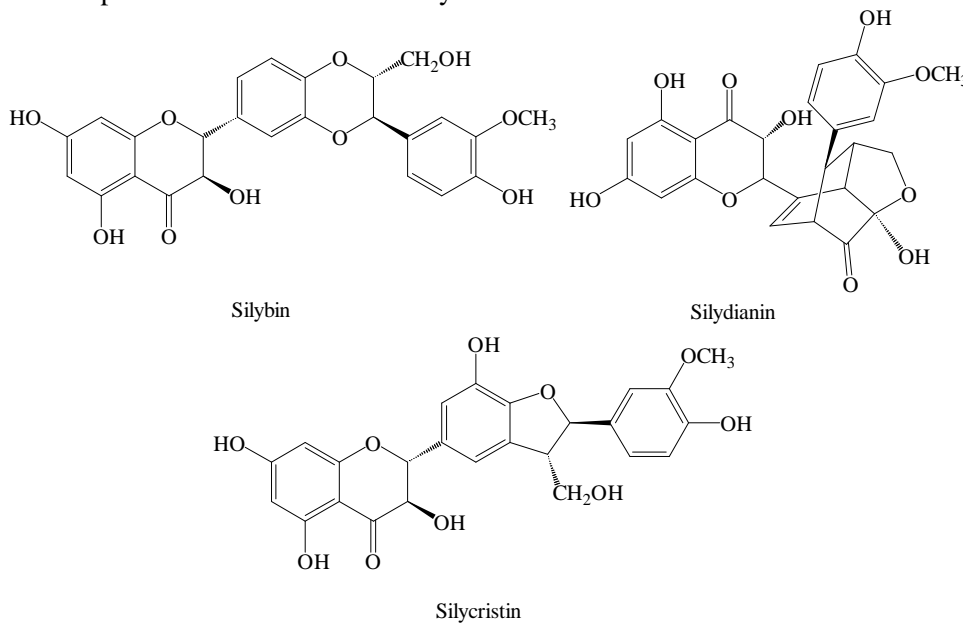
B. Dried fruits

Silybum marianum (Linn.) Gaertn.

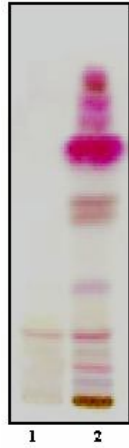
Chemical Constituents

Major

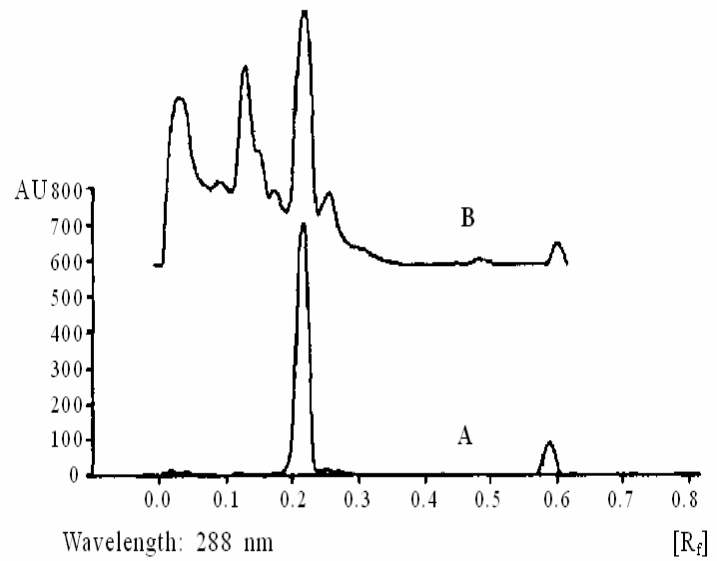
Silymarin (1.0 to 4.0 per cent), a mixture of related flavonolignans. The principal constituents of silymarin are silybin (silibinin), silycristin and silydianin. Silybin is the most important constituent of silymarin.



TLC/ HPLC Details



TLC profile of test solution of *Silybum marianum* fruit extract.
1: Silybin standard; **2:** Test solution.



TLC densitometric scan at 288 nm.
A. Silybin; **B.** Test solution of *Silybum marianum* fruit extract.