

27 *Santalum album* Linn. (Svetacandana)

Drug consists of dried heartwood of *Santalum album* Linn. (A,B,C & D); Fam. Santalaceae. It is a medium sized evergreen, semi- parasitic tree, 8 to 18 m in height and up to 2 m in girth; occurs in dry regions of Peninsular India, especially in Karnataka, Tamil Nadu and Kerala, ascending to 1,200 m altitude.



A. Flowering twig



C. Surface of dried heartwood



B. Fruiting twig



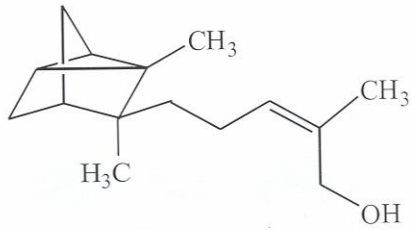
D. Wood chips

Santalum album Linn.

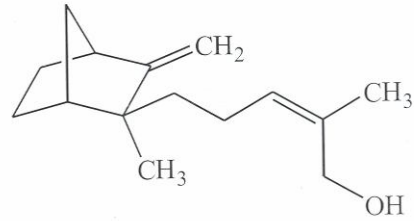
Chemical Constituents

Major

α -Santalol, β -santalol.

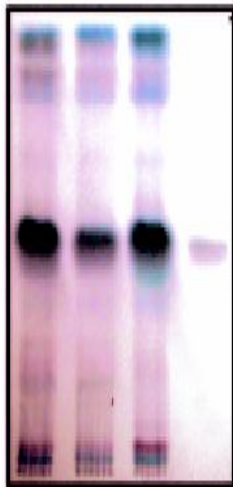


α -Santalol

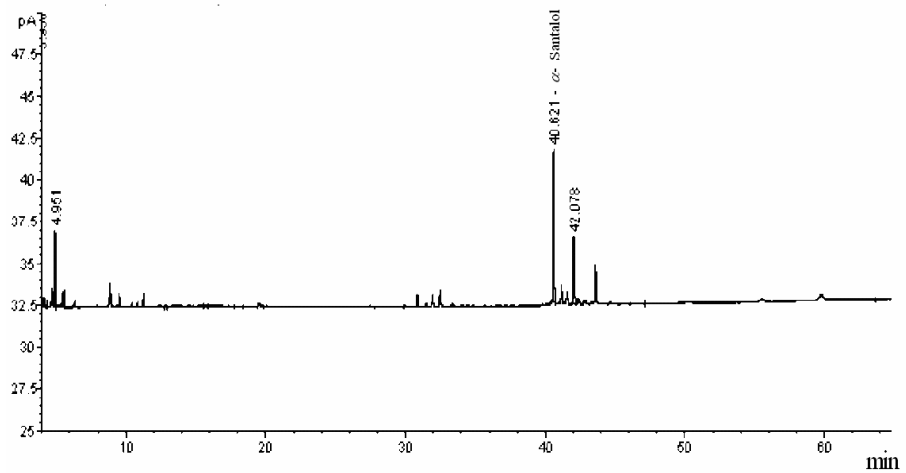


β -Santalol

TLC/GLC Details



TLC profile of *n*-hexane extract of *Santalum album* heartwood. **1-3:** Test solution; **4:** α -Santalol standard.



GLC profile of the essential oil from the heartwood of *Santalum album*.