

27 *Merremia turpethum* (Linn.) Shaw & Bhatt (Trivrt)

Drug consists of dried root of *Merremia turpethum* (Linn.) Shaw & Bhatt (syn. *Ipomoea turpethum* (Linn.) R.Br.; *Operculina turpethum* (Linn.) Silva Manso) (A & B); Fam. Convolvulaceae. A perennial twining shrub found throughout India, in plains ascending to 900 m in lower hills, occasionally cultivated in gardens as an ornamental plant.



A. Plant



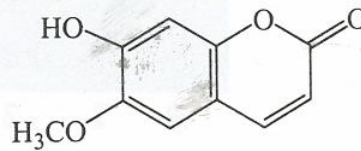
B. Dried root

Merremia turpethum (Linn.) Shaw & Bhatt

Chemical Constituents

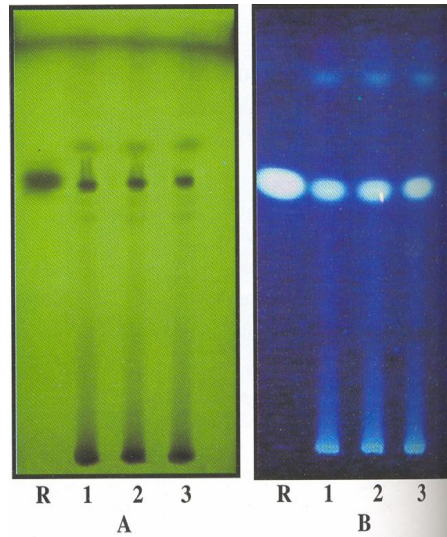
Major

Scopoletin⁴.

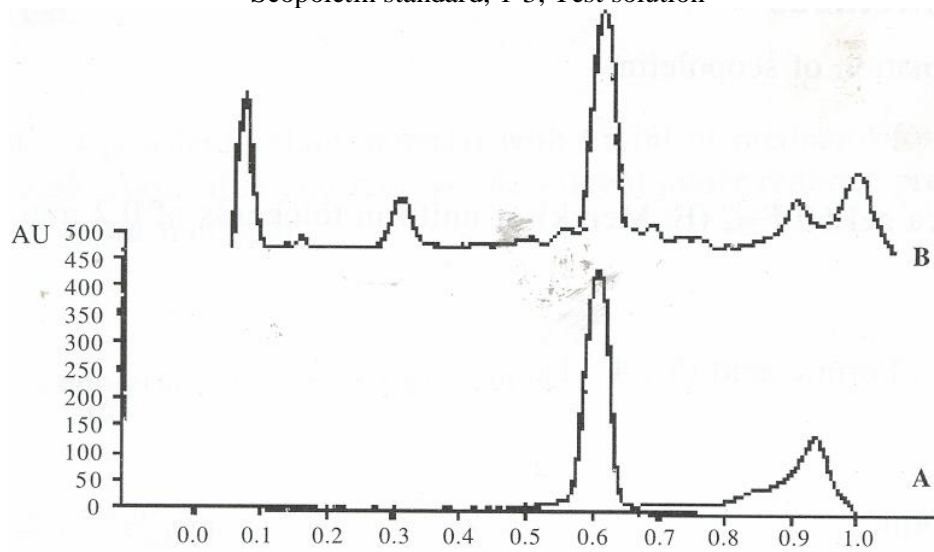


Scopoletin

TLC/ HPLC Details



TLC profile of test solution of *Merremia turpethum* root. **A.** UV 366 nm. **B.** UV 366 nm. **R:** Scopoletin standard; 1-3; Test solution



TLC densitometric scan at 349 nm. **A.** Scopoletin standard; **B.** Test solution of *Merremia turpethum*

