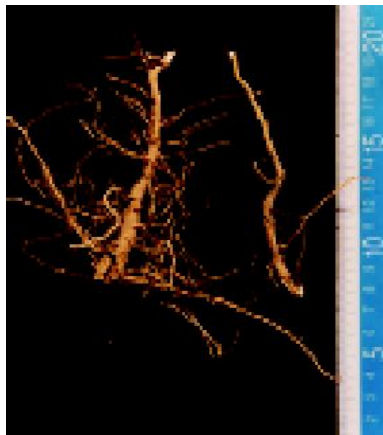


26 *Sida rhombifolia* Linn. ssp. *Rhombifolia* (Mahabala)

Drug consists of dried root of *Sida rhombifolia* Linn. ssp. *rhombifolia* (A & B); Fam. Malvaceae. It is an erect, annual or perennial, about 1.5 m high undershrub distributed throughout the country, especially in moist regions and ascending to an altitude of 1,800 m in the hills.



A. Aerial branch



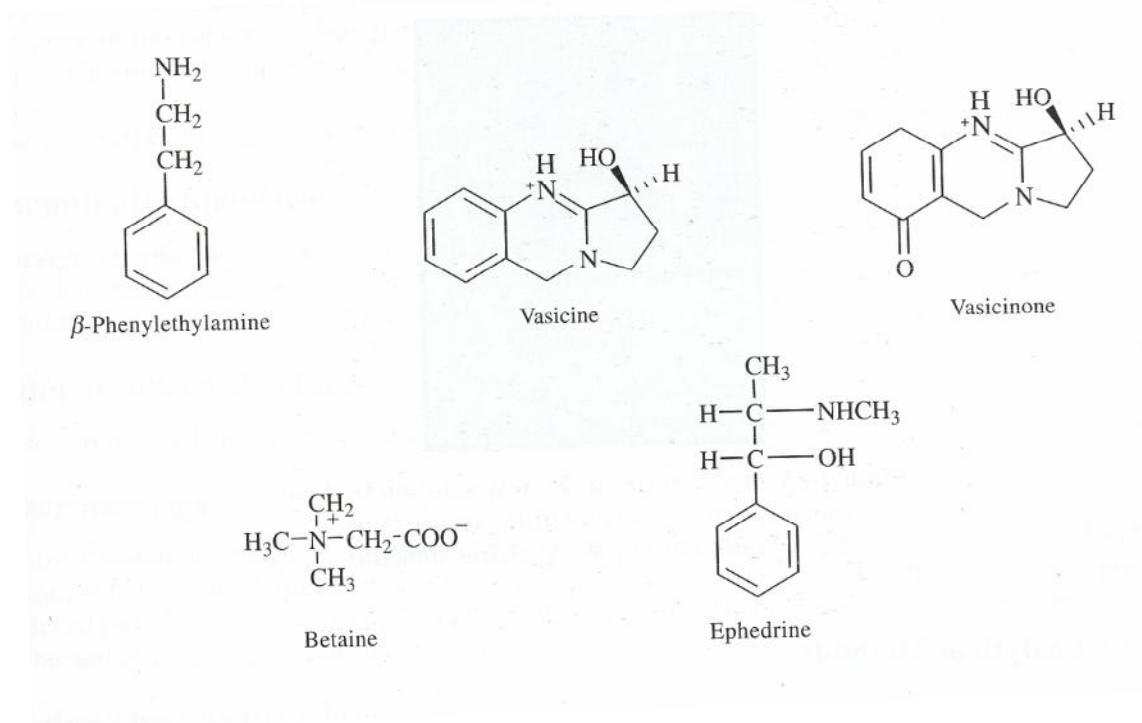
B. Dried root

Sida rhombifolia Linn. ssp. *Rhombifolia*

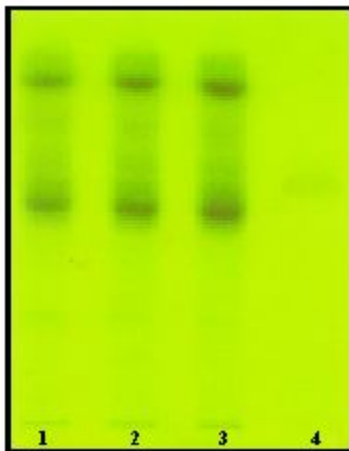
Chemical Constituents

Major

Alkaloids : β -phenylethylamine, vasicine, vasicinone, betaine.



TLC/ HPLC Details



TLC profile of the test solution of
Sida rhombifolia ssp. *rhombifolia* root extract
1-3 : Test solution, 4 : Vasicine standard.