

26 *Salvadora persica* Linn.

(Pilu)

Drug consists of leaf of *Salvadora persica* Linn. (syn. *S. wightiana* Bedd.; *S. indica* Wight; *Galenia asiatica* Burm.f.) (A, B & C); Fam. Salvadoraceae. A shrub or a small tree found in the drier parts of India up to an altitude of 450 m.



A. Tree



B. Flowering and fruiting twigs



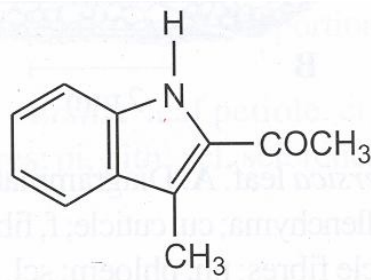
C. Dried leaves

Salvadora persica Linn.

Chemical Constituents

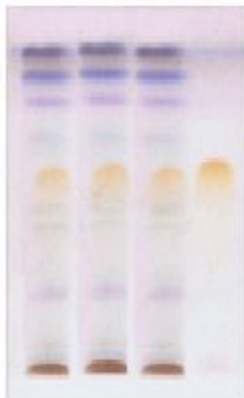
Major

Salvadoricine.



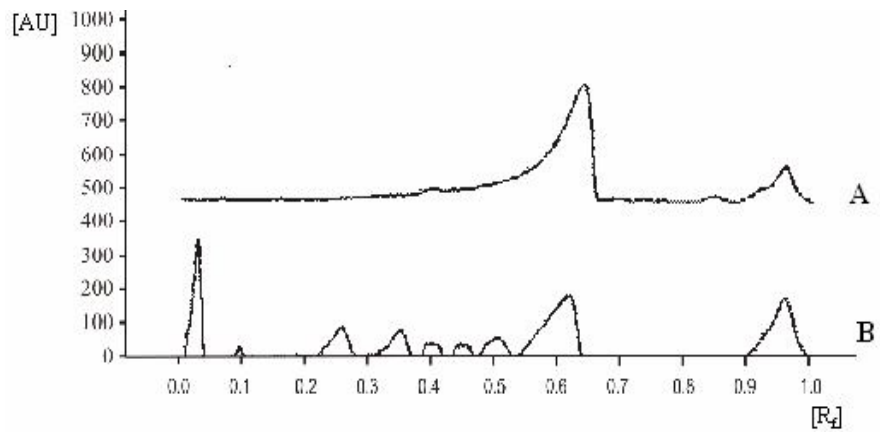
Salvadoricine

TLC/HPTLC Details



1 2 3 4

TLC profile of ethanol extract of *Salvadora persica* leaf. **1-3:** Test solution; **4:** Kaempferol standard.



HPTLC densitometric scan at 254 nm. **A.** Kaempferol standard; **B.** Test solution of *Salvadora persica* leaf.