

## 25 *Sesbania bispinosa* (Jacq.) W. F. Wight

Drug consists of dried pod of *Sesbania bispinosa* (Jacq.) W. F. Wight (syn. *S. aculeata* (Willd.) Poir.; *Aeschynomene bispinosa* Jacq.) (A & B); Fam. Fabaceae. A fast growing shrub up to 1.5 m high with 12-20 cm long linear pods; found in plains from the Western Himalayas to Sri Lanka.



A. Flowering twig



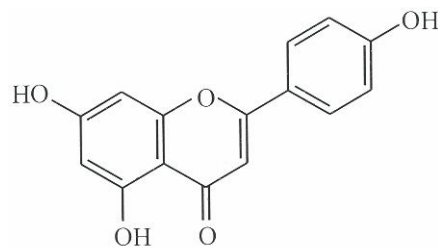
B. Dried pods and seeds

*Sesbania bispinosa* (Jacq.) W. F. Wight

### Chemical Constituents

#### Major

Apigenin.



Apigenin

