

25 *Saraca asoca* (Roxb.) de Wilde (Asokah)

Drug consists of dried stem bark of *Saraca asoca* (Roxb.) de Wilde (syn. *S. indica* Linn.); Fam. Fabaceae. The plant is an evergreen tree found in the foothills of central and eastern Himalayas, ascending to 600 m.



A. Plant



B. Flowering twig



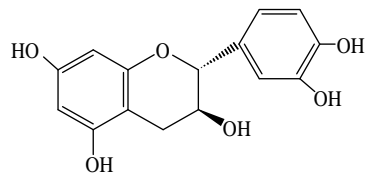
C. Pieces of stem bark

Saraca asoca (Roxb.) de Wilde

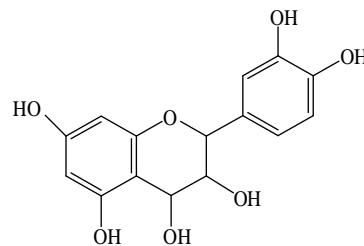
Chemical Constituents

Major

Tannins: (+)-catechin, (-)-epicatechin, leucocyanidin; leucopelargonidin, procyanidin B-2, 11'-deoxyprocyanidin B.

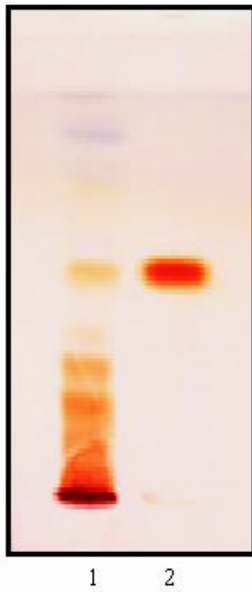


(+)-Catechin

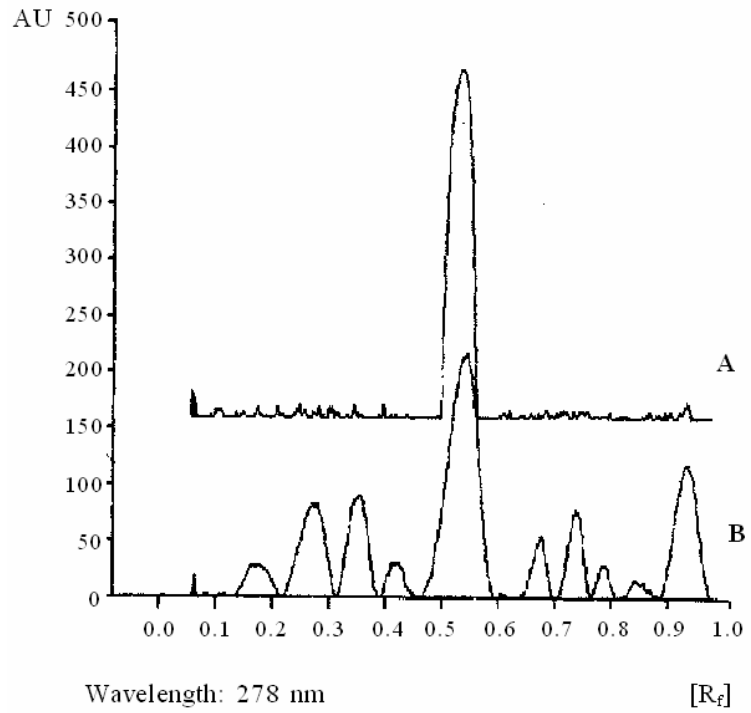


Leucocyanidin

TLC/ HPLC Details



TLC profile of test solution of *Saraca asoca* stem bark.
1: Test solution;
2: (+)-Catechin standard.



TLC densitometric scan at 278 nm.
A. (+)-Catechin standard;
B. Test solution of test solution of *Saraca asoca* stem bark.