

25 *Rhizophora mucronata* Lamk.

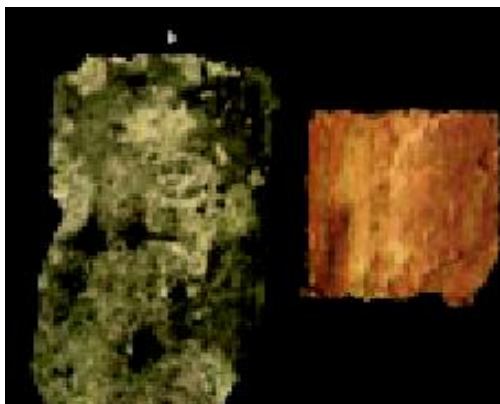
The drug consists of dried stem bark of *Rhizophora mucronata* Lamk. (A, B & C); Fam. Rhizophoraceae. A small mangrove tree commonly occurring along the muddy tidal shores and riverine creeks in India including Andaman and Nicobar Islands.



A. Plant



B. Flowering twig



C. Dried stem bark

b. Inner surface a. Outer surface

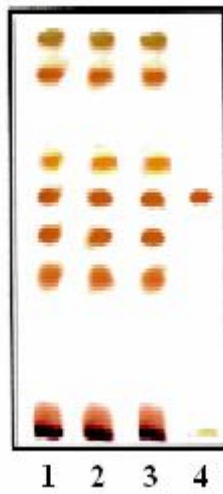
Rhizophora mucronata Lamk.

Chemical constituents

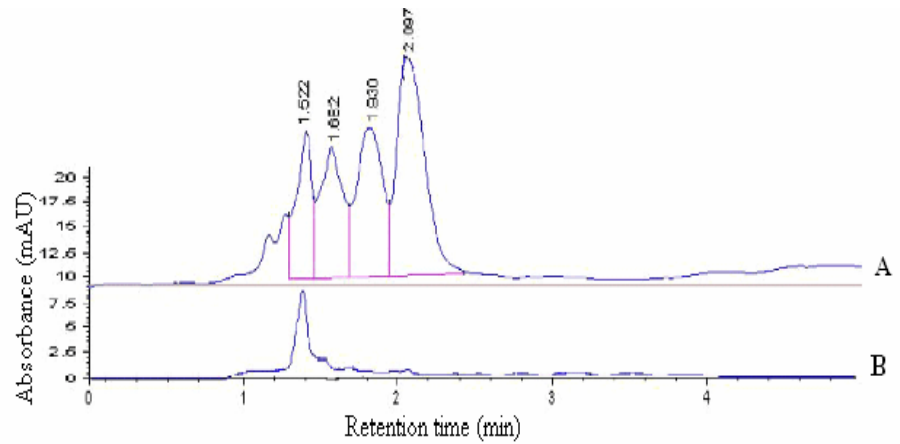
Major

Fatty acid esters.

TLC/HPLC Details



TLC profile of test solution of *Rhizophora mucronata* bark. **1-3:** Test solution ; **4:** Methyl stearate standard.



HPLC chromatogram of *Rhizophora mucronata* bark. **A.** Test solution; **B.** Methyl stearate standard.