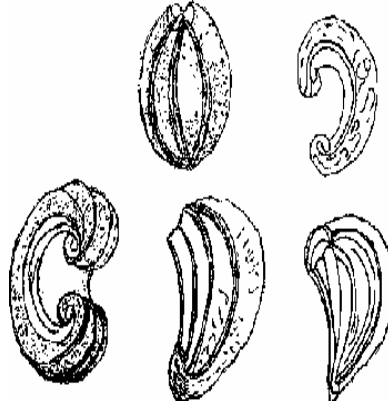


25 *Garcinia gummi-gutta* (Linn.) Rob. (Vrkkamla)

Drug consists of dried pericarp of the fruit of *Garcinia gummi-gutta* (Linn.) Rob. (syn. *G. cambogia* (Gaertn.) Desr.; *G. cambogia* (Gaertn.) Desr. var. *conicarpa* (Wight) Anders.) (A & B); Fam. Clusiaceae. It is a small tree, common in evergreen forests of Western Ghats, from Konkan southwards to Travancore, and in the Shola forests of the Nilgiris up to an altitude of 1800 m.



A. Fruiting twig



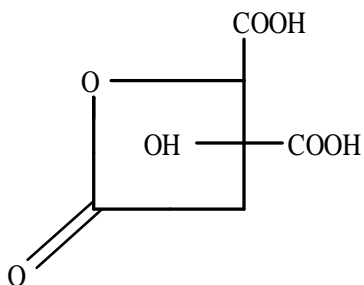
B. Longitudinally split dried pieces of pericarp in various shapes

Garcinia gummi-gutta (Linn.) Rob.

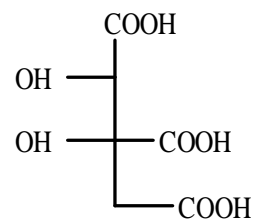
Chemical Constituents

Major

(-)-Hydroxycitric acid (-)-hydroxycitric acid lactone.

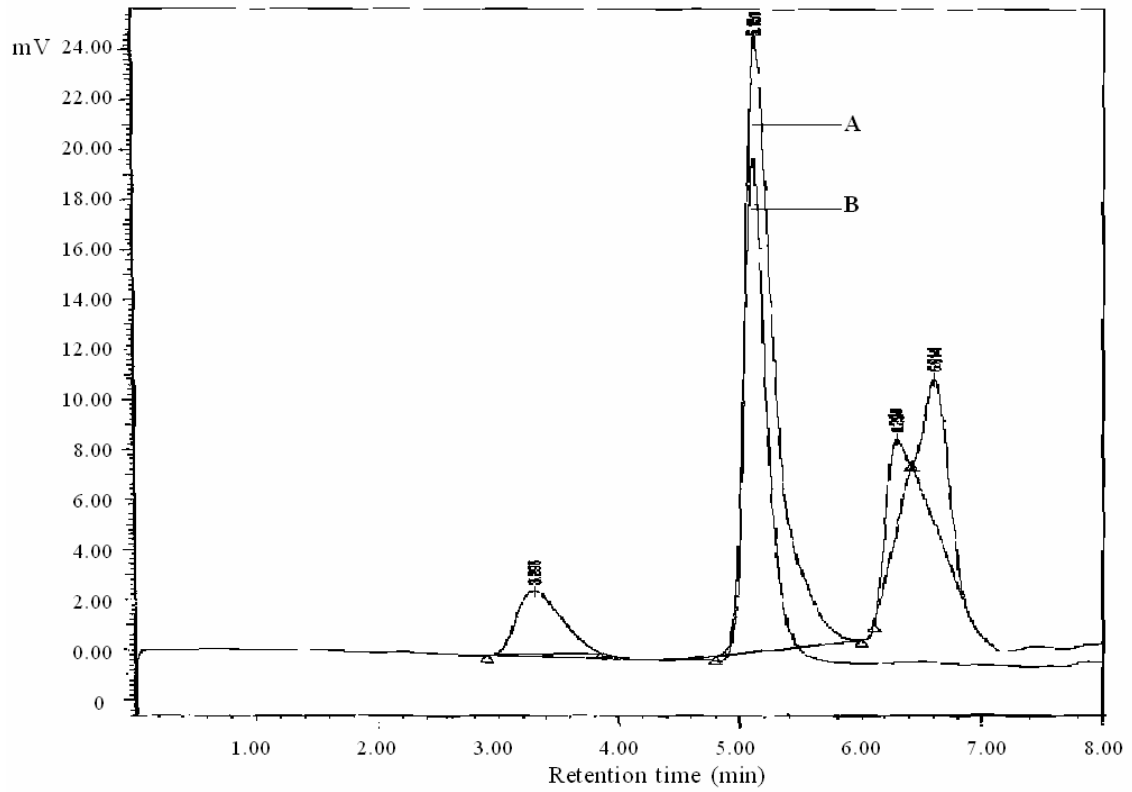


(-)-Hydroxycitric acid lactone



(-)-Hydroxycitric acid

HPLC Details



HPLC chromatogram using RI detector. A. (-)-Hydroxycitric acid lactone standard; . Test solution of *Garcinia gummi-gutta* pericarp.