

24 *Rauvolfia tetraphylla* Linn.

Drug consists of dried root of *Rauvolfia tetraphylla* Linn. (A & B) (syn. *R. canescens* Linn.); Fam. Apocynaceae. The plant is a perennial woody shrub, about 1 m in height and native to West Indies. It is cultivated and found as an escape in various parts of India (southern parts of Andhra Pradesh and Bihar)¹.



A. Flowering plant



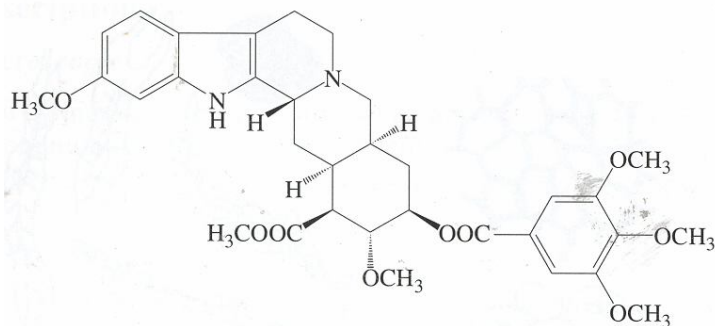
B. Dried root pieces

Rauvolfia tetraphylla Linn.

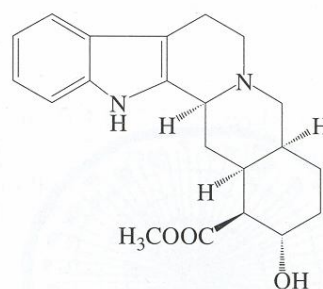
Chemical Constituents

Major

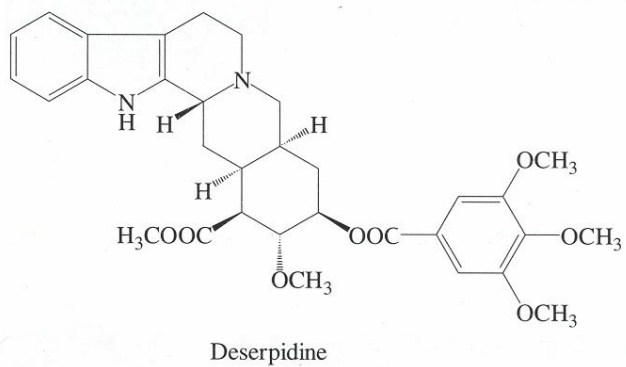
Pharmacologically important alkaloids are deserpidine (= canescine), α -yohimbine (= rauwolscine) and reserpine.



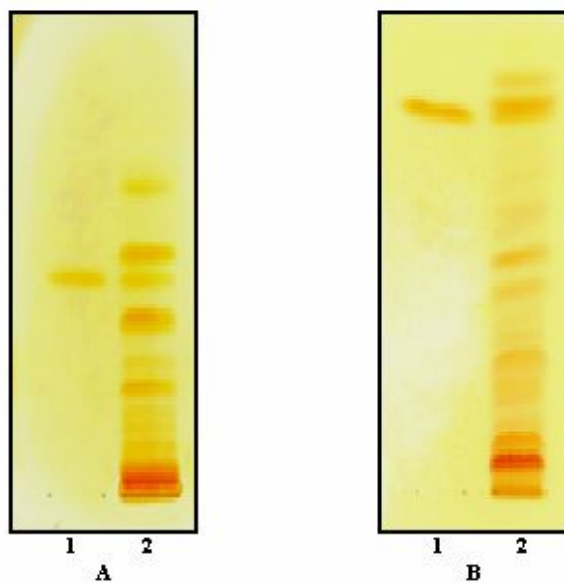
Reserpine



α -Yohimbine

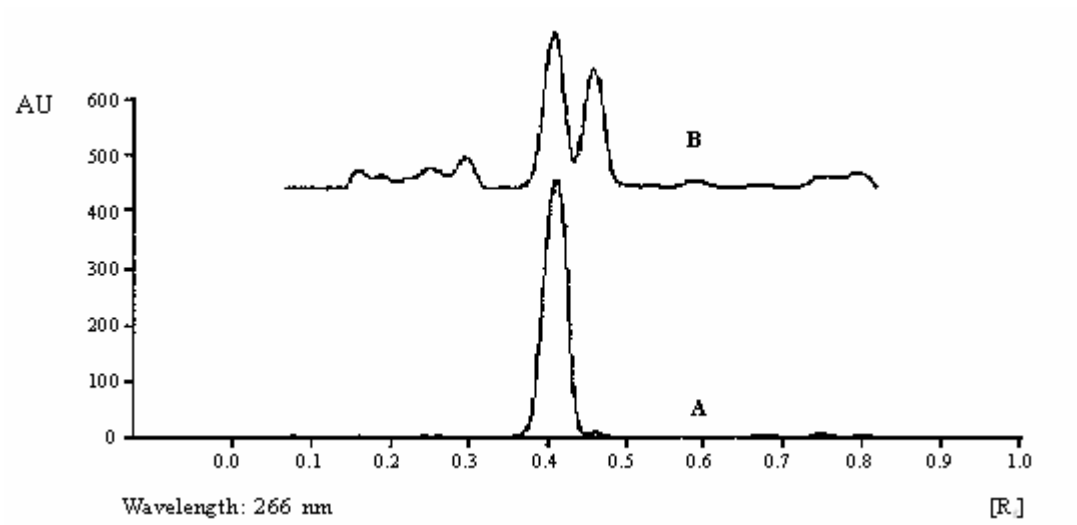


TLC/ HPLC Details



TLC profile of test solution of
Rauvolfia tetraphylla root extract.

- A.** Solvent system TLC-1. 1: Reserpine standard; 2: Test solution.
B. Solvent system TLC-2. 1: Reserpine standard; 2: Test solution.



TLC densitometric scan at 266 nm.
A. Reserpine
B. Test solution of *Rauwolfia tetraphylla* root extract.