

24 *Prunus cerasoides* D. Don (Padmaka)

Drug consists of dried mature seed of *Prunus cerasoides* D. Don (syn. *P. puddum* Roxb. ex Brandis) (A & B); Fam. Rosaceae. The plant is middle sized or large tree; found in sub-temperate Himalayan region from Uttaranchal to Sikkim up to an elevation of 900 to 2400 m.



A. Flowering branch



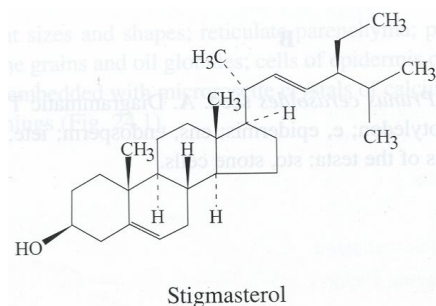
B. Dried seeds

Prunus cerasoides D. Don

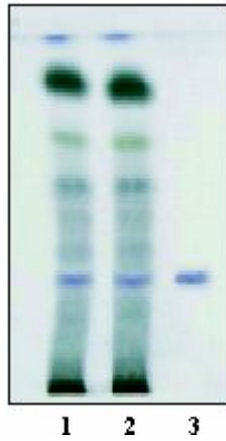
Chemical Constituents

Major

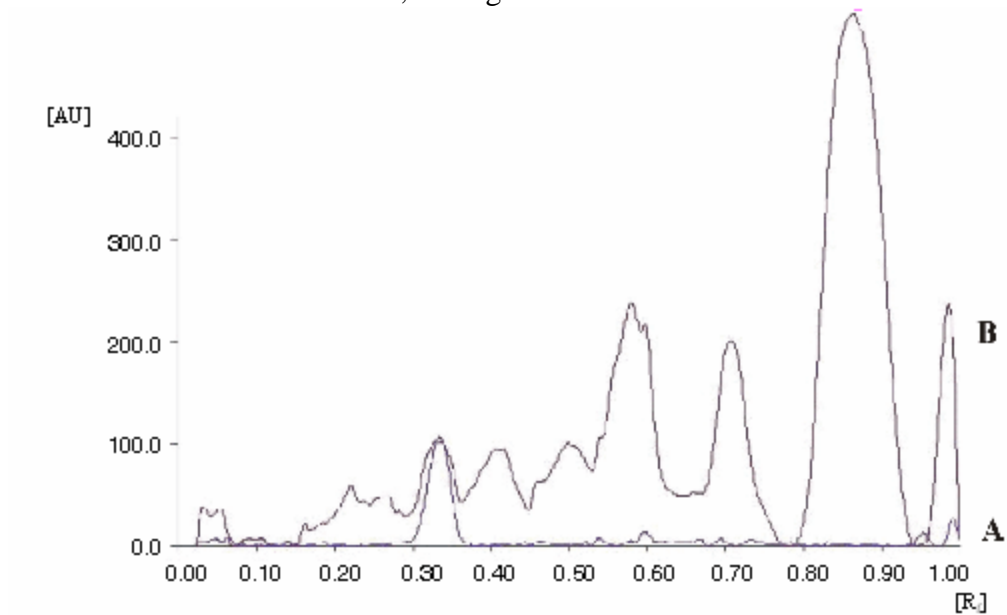
Stigmasterol.



TLC Details



TLC profile of test solution of methanol extract of *Prunus cerasoides* seed. **1-2:** Test solution; **3:** Stigmasterol standard.



HPTLC densitometric scan at 656 nm. **A.** Stigmasterol standard; **B.** Test solution of methanol extract of *Prunus cerasoides* seed.