

23 *Pterocarpus marsupium* Roxb. (Asana)

Drug consists of dried heartwood of *Pterocarpus marsupium* Roxb. (A, B & C); Fam. Fabaceae. It is a moderate to large sized deciduous tree, up to 30 m high and 2.5 m in girth with almost straight bole, found throughout the forests in Peninsular India.



A. A flowering twig



B. Heartwood

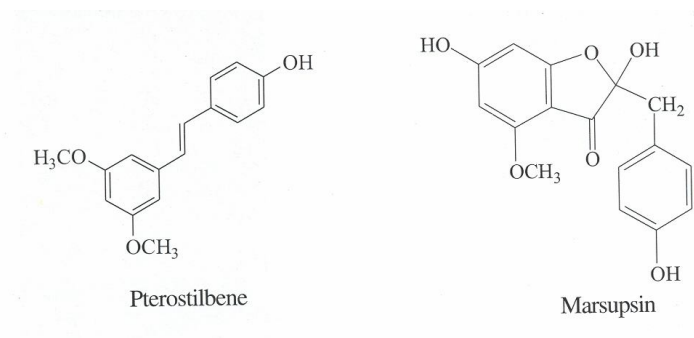


C. Wood chips

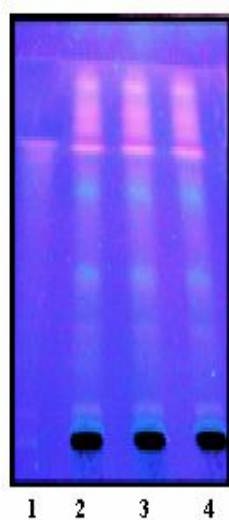
Chemical Constituents

Major

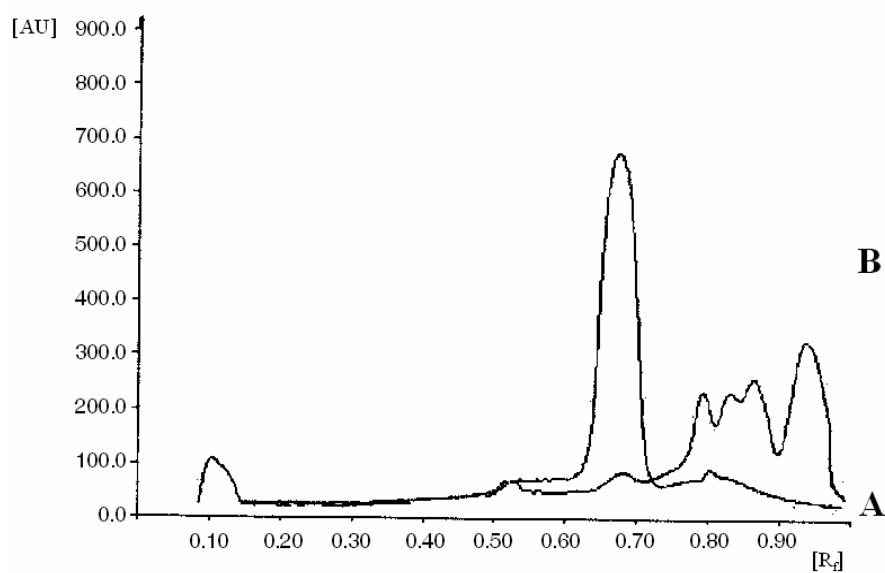
Pterostilbene, marsupsin.



TLC/HPTLC Details



TLC profile of methanolic extract of the heartwood of *Pterocarpus marsupium*. **1:** Pterostilbene standard; **2- 4:** Test solution.



HPTLC densitometric scan at 365 nm. **A.** Pterostilbene standard; **B.** Test solution of *Pterocarpus marsupium* heartwood.