

23 *Phyllanthus maderaspatensis* Linn. (Bhudhatri)

Drug consists of whole plant of *Phyllanthus maderaspatensis* Linn.; Fam. Euphorbiaceae. The plant is an annual herb, growing as a weed throughout India, in plains.

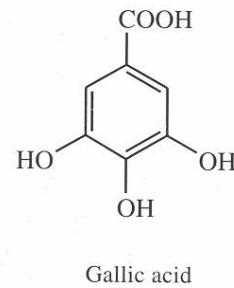
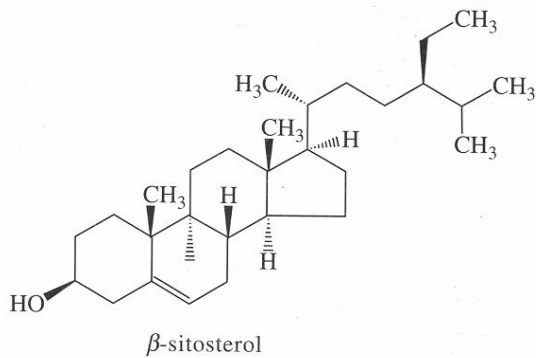


Phyllanthus maderaspatensis Linn.

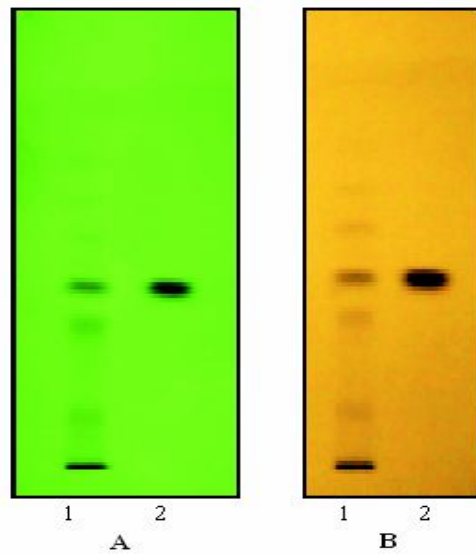
Chemical Constituents

Major

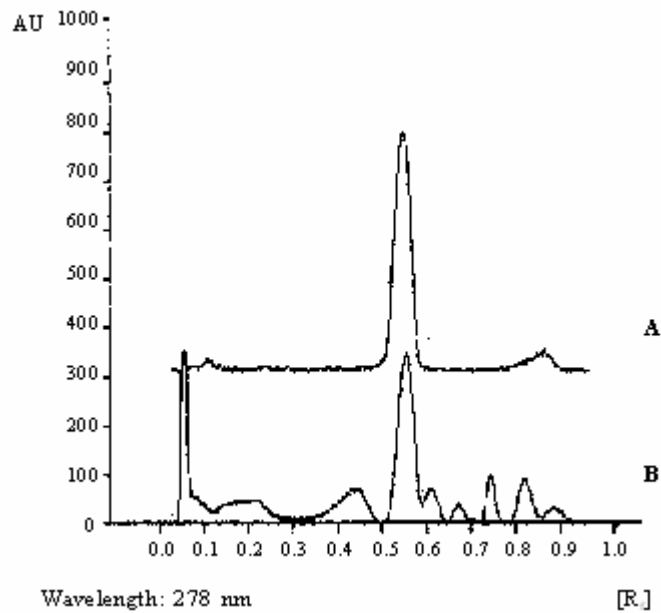
Seed contains linoleic acid, linolenic acid, myristic acid, oleic acid, palmitic acid, stearic acid.



TLC/ HPLC Details



TLC profile of test solution of whole plant of *Phyllanthus maderaspatensis*.
A. Under UV light at 254 nm; **B.** Derivatized.
1: Test solution; **2:** Gallic acid standard.



TLC densitometric scan at 278 nm.
A. Gallic acid standard; **B.** Test solution of *Phyllanthus maderaspatensis* whole plant extract.