

## 23 *Euphorbia thymifolia* Linn. (Dugdhika)

Drug consists of dried whole plant of *Euphorbia thymifolia* Linn. (Plate 23.1); Fam. Euphorbiaceae. The plant is a branched, prostrate, fleshy, spreading weed growing in wet places, distributed throughout India, in plains and lower hills, up to an altitude of 1800 m.

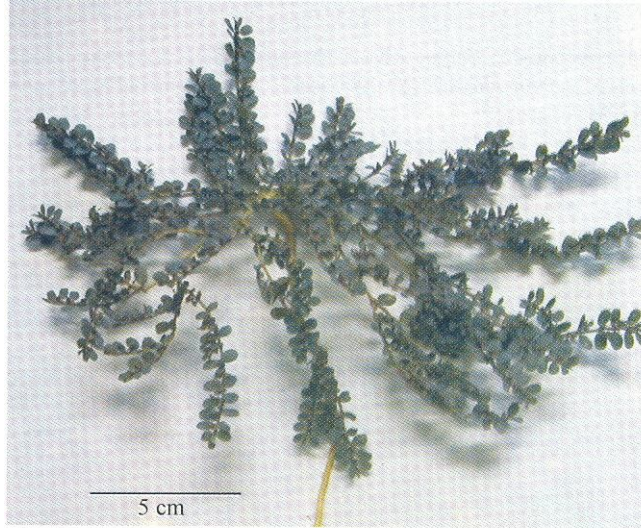
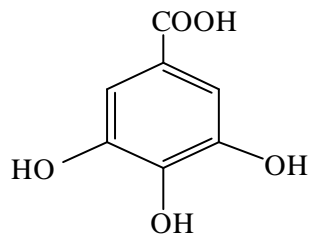


Plate 23.1 *Euphorbia thymifolia* Linn.

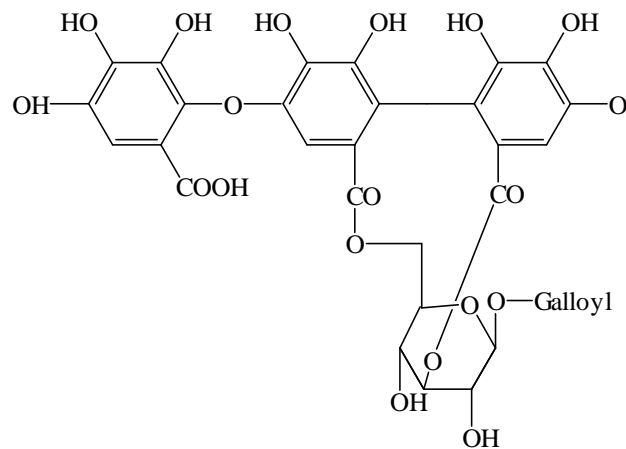
### Chemical Constituents

#### Major

Gallic acid, tannins.



Gallic acid



Isomallotinic acid