

23 *Plumbago zeylanica* Linn. (Citraka)

Drug consists of the dried root of *Plumbago zeylanica* Linn. (A & B); Fam. Plumbaginaceae. It is a large perennial undershrub, found throughout India in plains and occasionally grown in the gardens.



A. Flowering twig



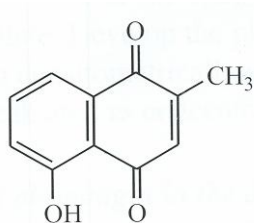
B. Dried root pieces

Plumbago zeylanica Linn.

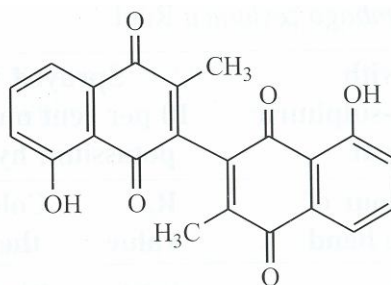
Chemical Constituents

Major

Plumbagin, 3-chloroplumbagin, 3,3'-biplumbagin, 1,2(3)-tetrahydro-3,3'-biplumbagin; chitranone, zeylinone, isozeylinone, elliptinone, droserone, isoshinanolone; maritinone; 3,8-dihydroxy-6-methoxy-2-isopropyl-1,4-naphthoquinone, 5,7-dihydroxy-8-methoxy-2-methyl-1,4-naphthoquinone, plumbagic acid, plumbagic acid glucosides (3'-O- β -glucopyranosyl plumbagic acid and 3'-O- β -glucopyranosyl plumbagic acid methyl ester); seselin, 5-methoxyseselin, suberosin, xanthyletin, xanthoxyletin.

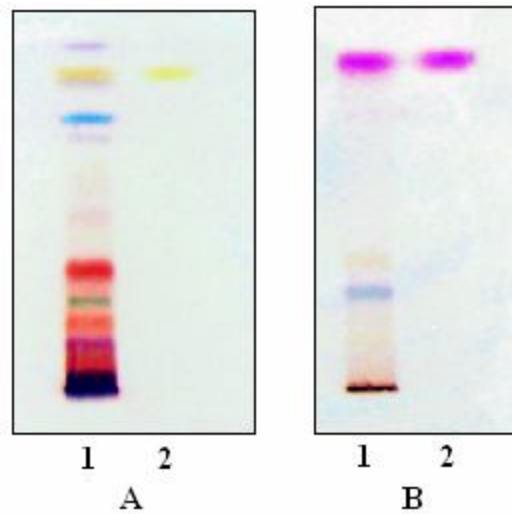


Plumbagin

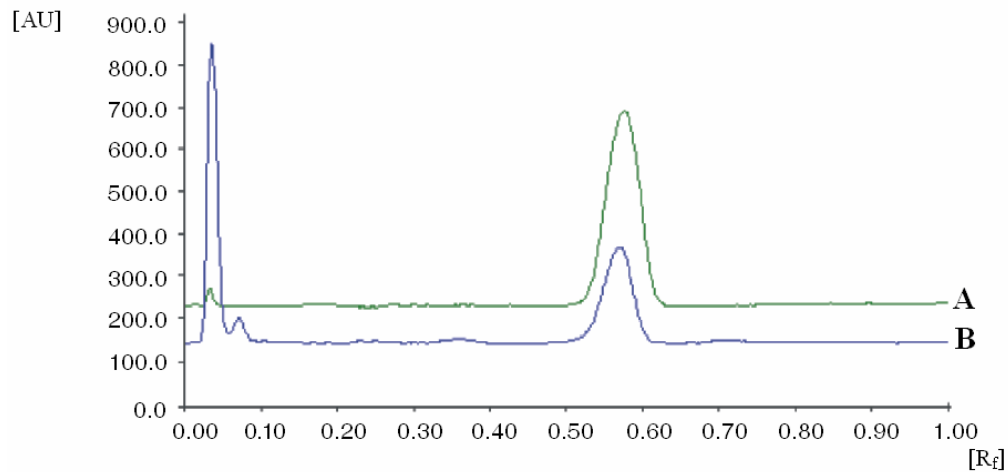


3,3'-Biplumbagin

TLC/HPTLC Details



TLC profile of test solution of methanol extract of *Plumbago zeylanica* root. **A.** Sprayed with anisaldehyde-sulphuric acid reagent; **B.** Sprayed with 10 per cent methanolic potassium hydroxide. **1:** Test solution; **2:** Plumbagin standard.



HPTLC densitometric scan at 272 nm. **A.** Plumbagin standard; **B.** Test solution of acetone extract of *Plumbago zeylanica* root.