

## 22 *Myristica malabarica* Lamk.

(Vanyajatiphala)

Drug consists of dried mace (aril), an outgrowth of seed and kernel of *Myristica malabarica* Lamk. (A,B,C,D & E); Fam. Myristicaceae. The plant is a large tree, 7 to 12 m tall, occurring naturally in evergreen forests up to 300 m, throughout Southern India.



A. Fruiting twig



B. Dried entire aril (mace)



C. Fresh fruit with seed in one half



F. Dried entire seed



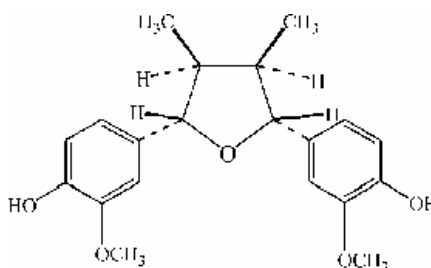
E. Dried entire kernel

### Chemical Constituents

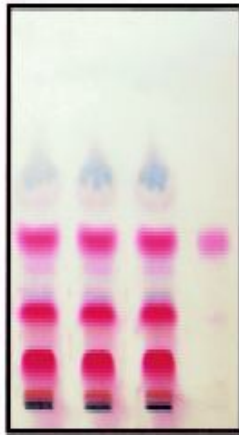
#### Major

Malabaricanol.

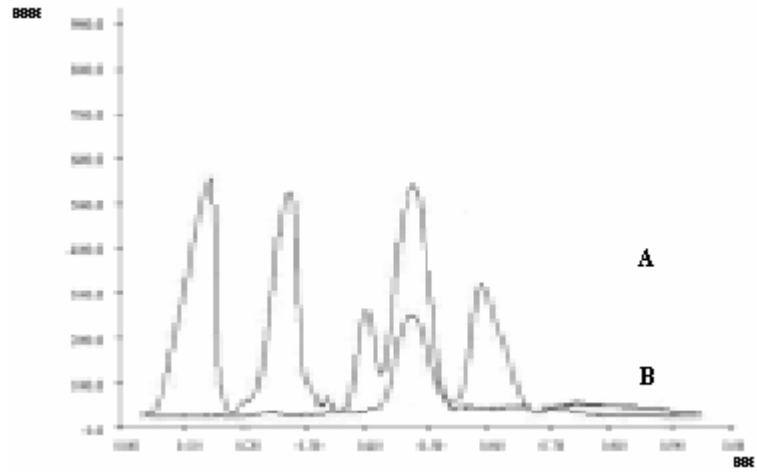
### TLC/HPTLC Details



Malabaricanol



TLC profile of *n*-hexane–chloroform (1:1) extract of *Myristica malabarica* aril and kernel. **1-3:** Test solution; **4:** Malabaricanol standard.



HPTLC densitometric scan at 254 nm. **A.** Test solution of *Myristica malabarica* aril and kernel; **B.** Malabaricanol standard.