

22 *Plumbago indica* Linn. (Rakta citraka)

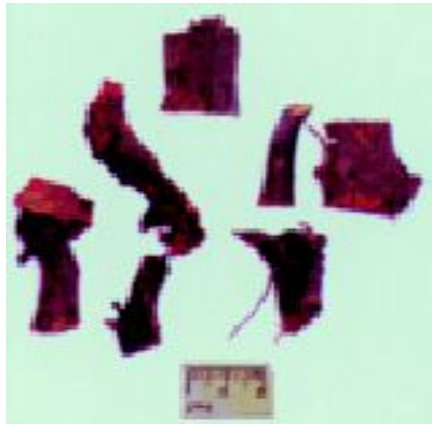
Drug consists of dried root of *Plumbago indica* Linn. (syn. *P. rosea* Linn.) (A, B & C); Fam. Plumbaginaceae. The plant is a shrubby perennial; growing throughout India often as a cultivated plant or as a garden escape.



A. Plant



B. Flowering twig



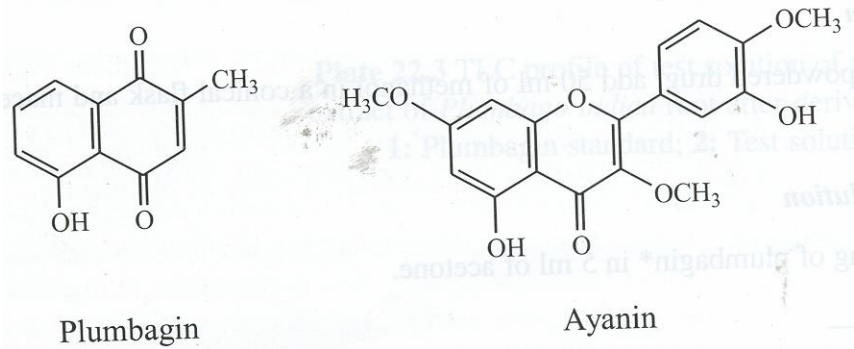
C. Dried root pieces

Plumbago indica Linn.

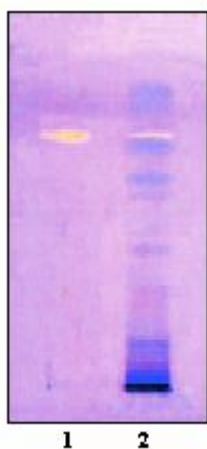
Chemical Constituents

Major

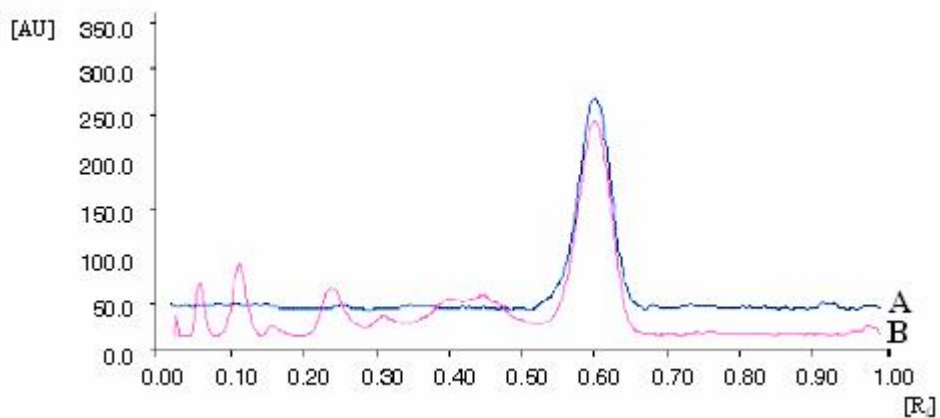
Plumbagin, 2,3-epoxyplumbagin, plumbagic acid, 3-O-3'-bidroserone, plumbagic acid lactone, roseanone, droserone, elliptinone, zeylanone.



TLC/HPTLC Details



TLC profile of test solution of methanol extract of *Plumbago indica* root after derivatization. **1:** Plumbagin standard; **2:** Test solution.



HPTLC densitometric scan at 272 nm. **A.** Plumbagin standard; **B.** Test solution of methanol extract of *Plumbago indica* root.