

21 *Piper betle* Linn. (Tambula)

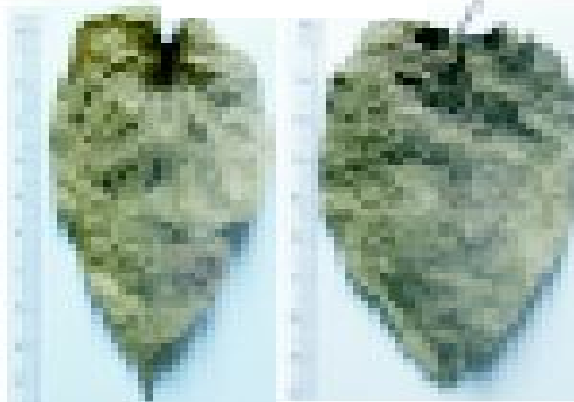
Drug consists of dried mature leaf of **Piper betle* Linn. (A, B & C); Fam. Piperaceae. It is a dioecious perennial climbing lianas; cultivated throughout the hotter and damper parts of India.



A. Twig and leaves



B. Fresh leaves



C. Dried leaf

a. Upper surface

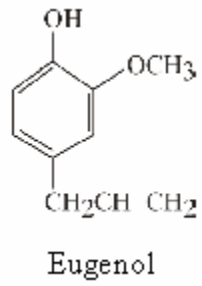
b. Lower surface

Piper betle Linn.

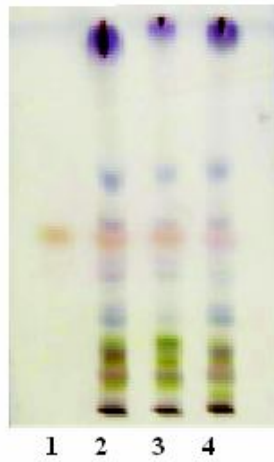
Chemical Constituents

Major

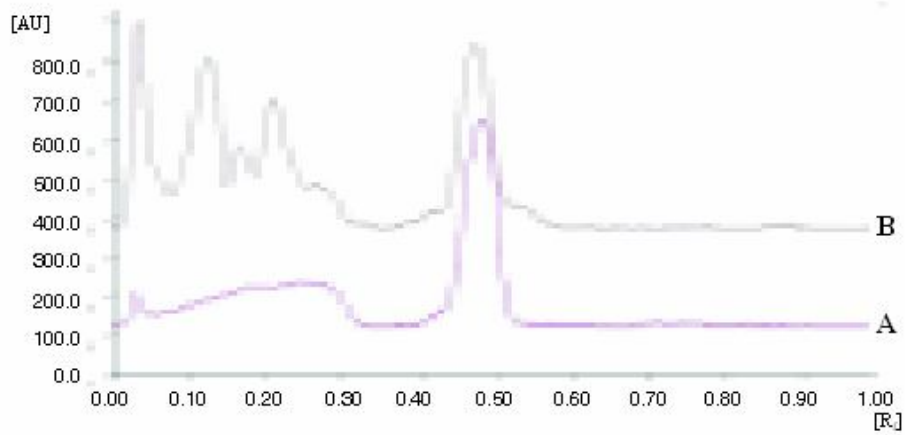
Eugenol, eugenyl acetate, β -sitosterol.



TLC/HPTLC Details



TLC profile of test solution of hexane extract of *Piper betle* leaf. **1:** Eugenol standard; **2-4:** Test solution.



HPTLC densitometric scan at 280 nm.

A. Eugenol standard; **B.** Test solution of hexane extract of *Piper betle* leaf.