

21 *Ocimum basilicum* Linn. (Barbari)

Drug consists of dried leaf of *Ocimum basilicum* Linn. (A & B); Fam. Lamiaceae. It is an erect, usually glabrous, strong scented shrub, indigenous to lower hills of Punjab and cultivated almost throughout India.



A. Flowering branch



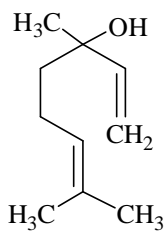
B. Dried leaves

Ocimum basilicum Linn.

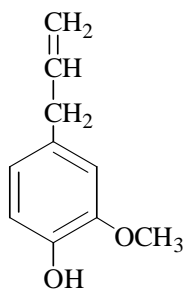
Chemical Constituents

Major

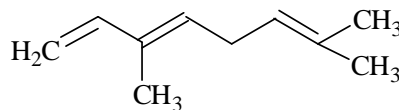
Essential oil (0.28 to 0.65%) - methyl chavicol and eugenol.



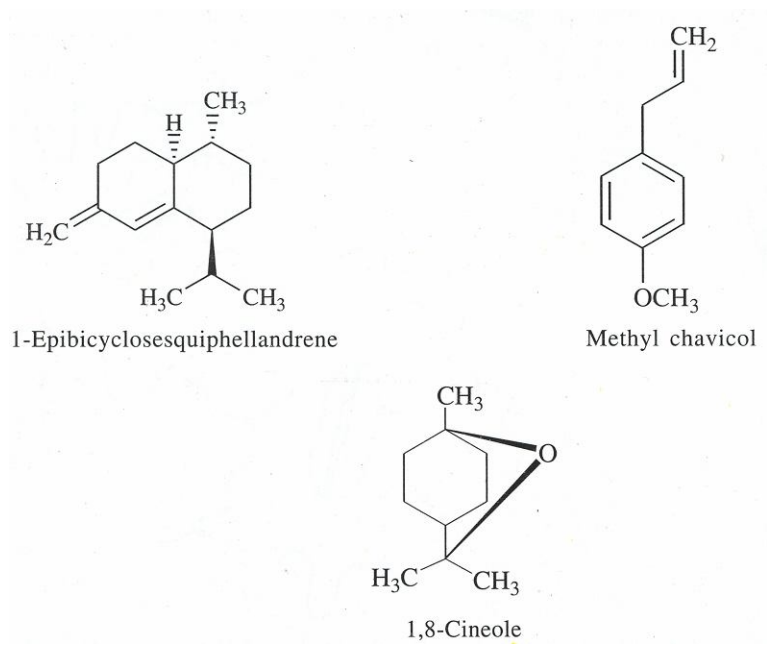
Linalool



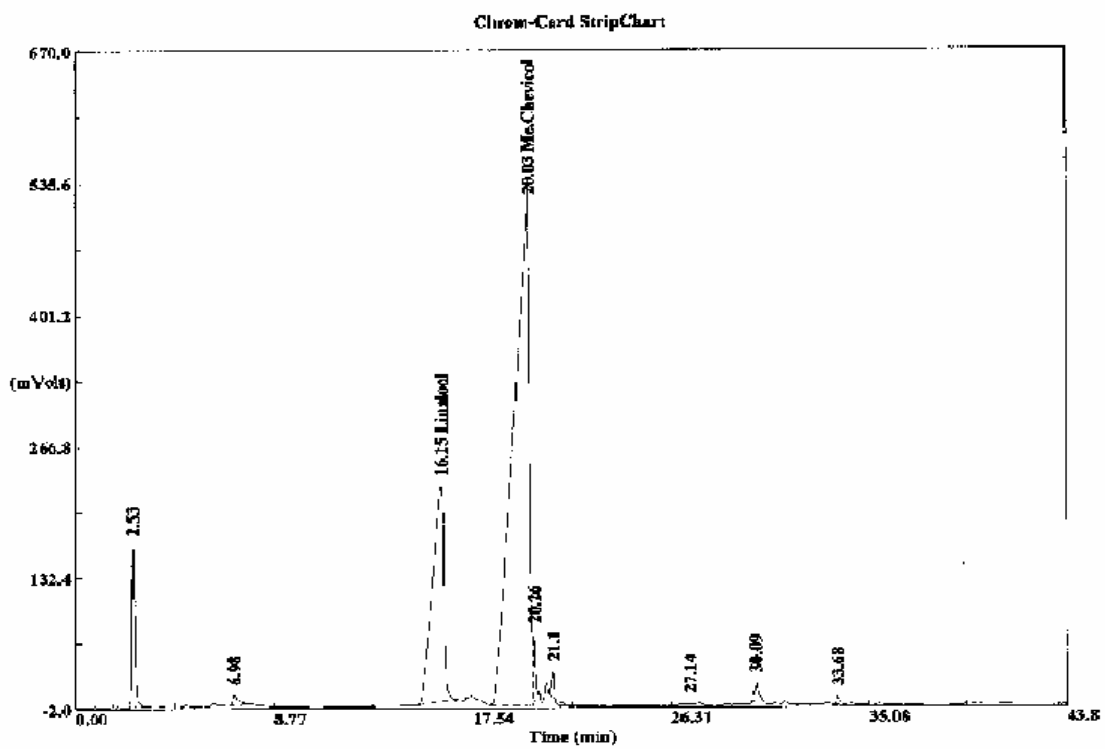
Eugenol



trans- β -Ocimene



TLC/ HPLC Details



GLC fingerprint profile of essential oil of *Ocimum basilicum* leaf.