

## 21 *Madhuca indica* J.F. Gmel. (Madhuka)

Drug consists of dried fleshy corolla of *Madhuca indica* J.F. Gmel. (syn. *M. longifolia* (Koen.) Macbr.; *M. latifolia* (Roxb.) Macbr.; *Bassia latifolia* Roxb.; *B. longifolia* Koen.) (A & B); Fam. Sapotaceae. It is a medium-sized deciduous tree, found in the mixed deciduous forests throughout India, and also cultivated.



A. Plant



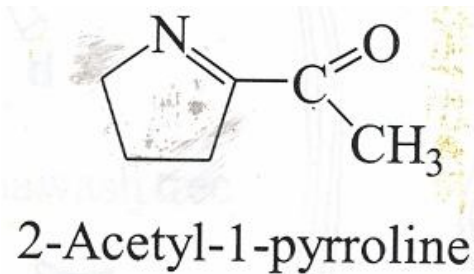
B. Dried fleshy corolla lobes

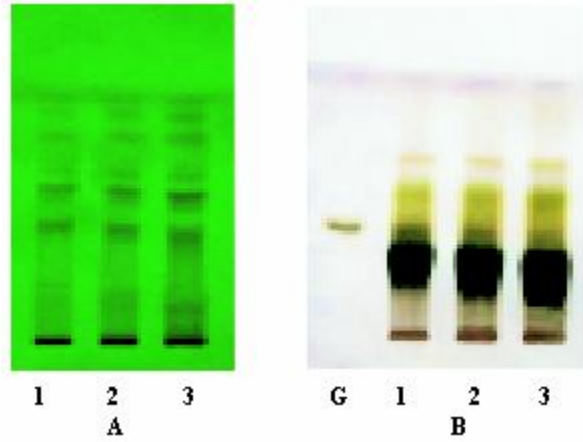
*Madhuca indica* J.F. Gmel.

### Chemical Constituents

#### Major

A polysaccharide comprising of D-glucose, L-arabinose and D-glucuronic acid.





TLC profile of test solution of *Madhuca indica* flower. **A.** UV 254 nm; **B.** Derivatized.  
**1-3:** Test solution; **G:** D-Glucose standard.