

21 *Dioscorea deltoidea* Wall. ex Kunth

Drug consists of dried rhizome of *Dioscorea deltoidea* Wall. ex Kunth (A & B); Fam. Dioscoreaceae. It occurs throughout North-western Himalayas and extends from Kashmir and Punjab eastwards to Bhutan, between altitude 900-3000 m and Khasia hills, altitude 1200 to 1500 m.



A. Rhizome (dried)

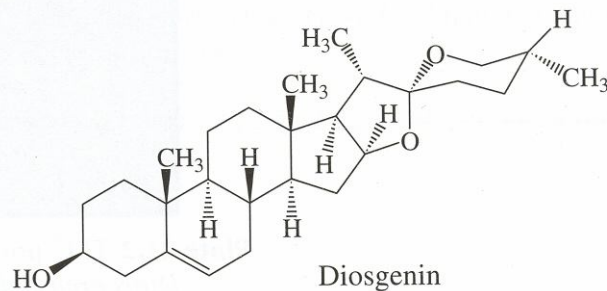
B. Rhizome (fresh)

Dioscorea deltoidea Wall. ex Kunth

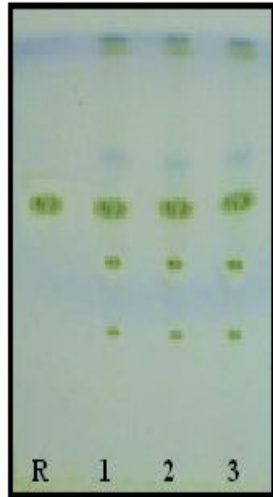
Chemical Constituents

Major

Diosgenin.

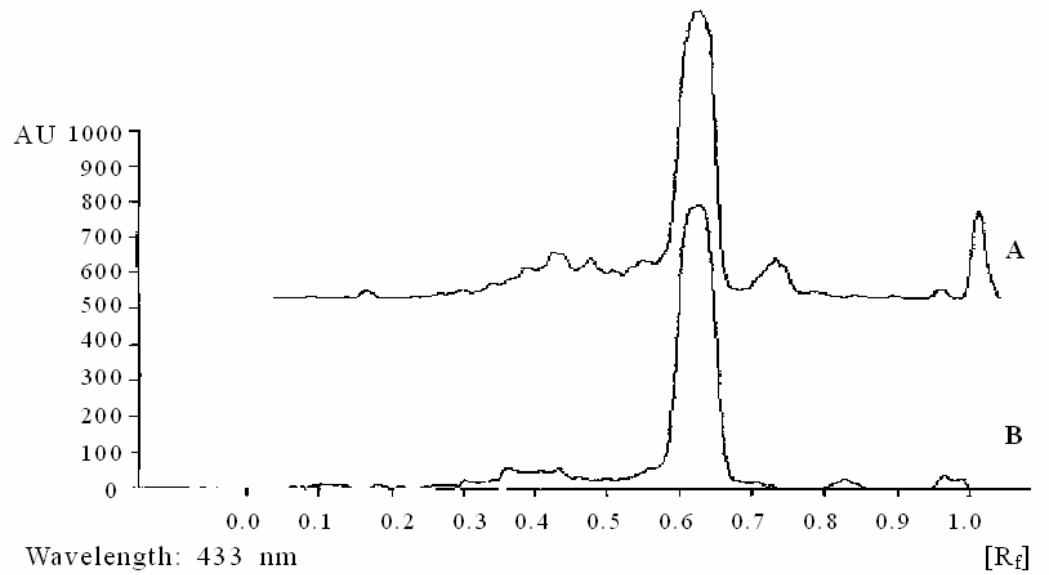


TLC Details



TLC profile of test solution of *Dioscorea deltoidea* rhizome.

R: Diosgenin standard; **1-3:** Test solution.



TLC densitometric scan at 433 nm.

A. Test solution of *Dioscorea deltoidea* rhizome; **B.** Diosgenin standard.