

20 *Mimusops elengi* Linn. (Bakulah)

Drug consists of dried stem bark of *Mimusops elengi* Linn. (A, B & C); Fam. Sapotaceae. It is an evergreen tree, about 12 to 15 m in height, distributed in Deccan peninsular region and the Andamans and frequently cultivated in North India¹.



A. Tree



B. Fruiting branch



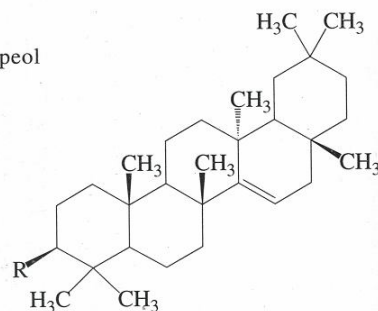
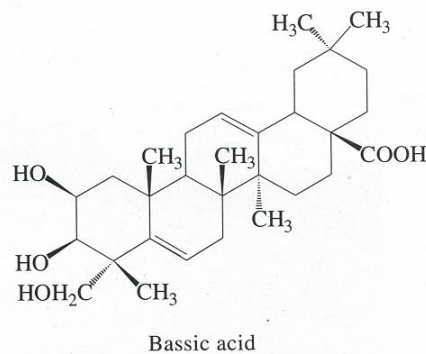
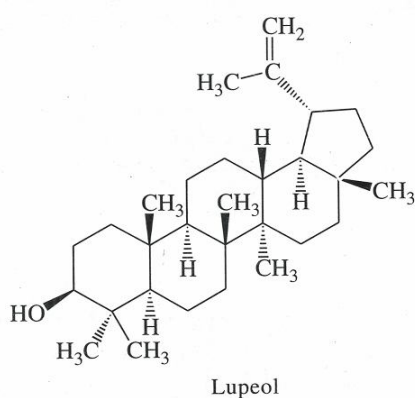
C. Dried stem bark

Mimusops elengi Linn.

Chemical Constituents

Major

Pentacyclic triterpenoids: β -amyrin, bassic acid, betulinic acid, lupeol, taraxerone, taraxerol³ and ursolic acid.

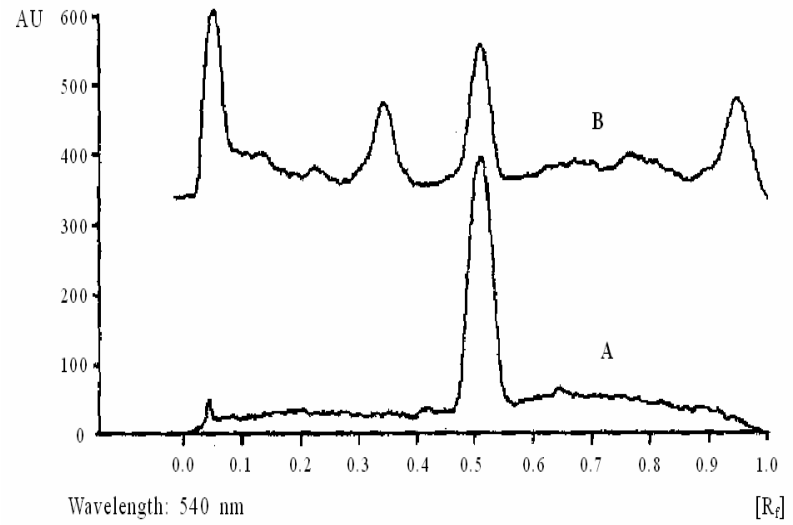


Taraxerone R = O
Taraxerol R = OH

TLC/ HPLC Details



TLC profile of test solution of *Mimusops elengi* stem bark extract.
1: Lupeol standard;
2: Test solution.



TLC densitometric scan at 540 nm.
A. Lupeol
B. Test solution of *Mimusops elengi* stem bark extract.