

20 *Jasminum auriculatum* Vahl (Yuthika)

The drug consists of dried leaf and flower of *Jasminum auriculatum* Vahl (A,B,C & D); Fam. Oleaceae. A scandent shrub growing in the drier parts of Peninsular India, also cultivated in the gardens in UP, Bihar and West Bengal for its fragrant flowers.



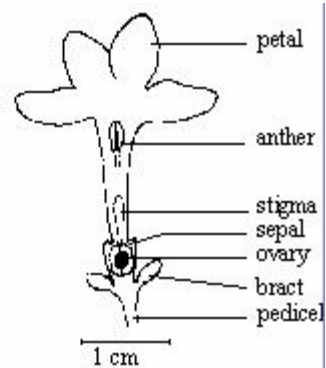
A Flowering twig



B. Dried leaves



Dry flower



Vertical section of flower

Chemical Constituents

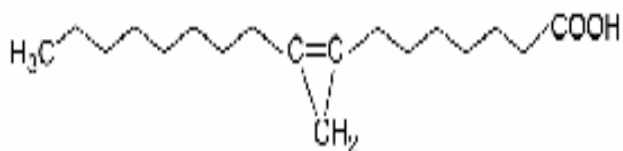
Major

Leaf

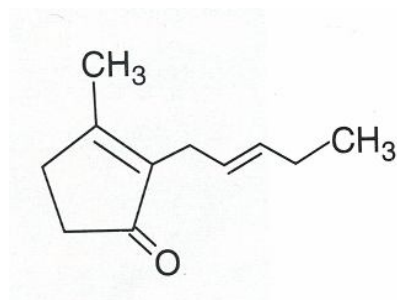
Malvalic acid.

Flower

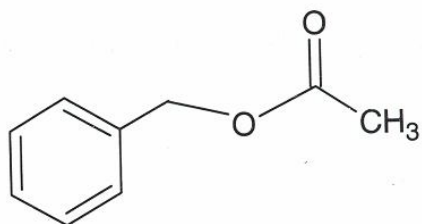
Benzyl acetate.



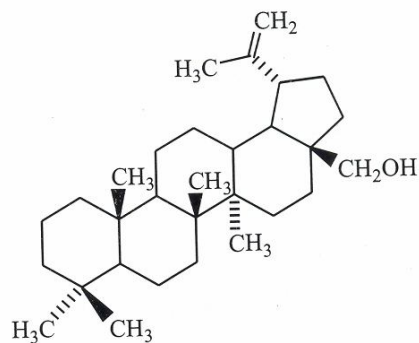
Malvalic acid



Benzyl acetate

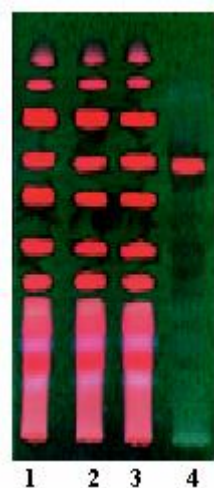


Jasmone

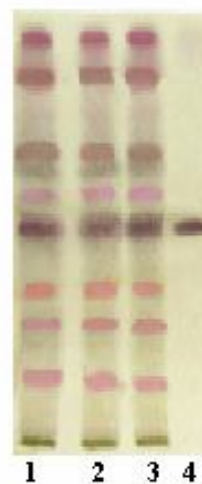


Jasminol

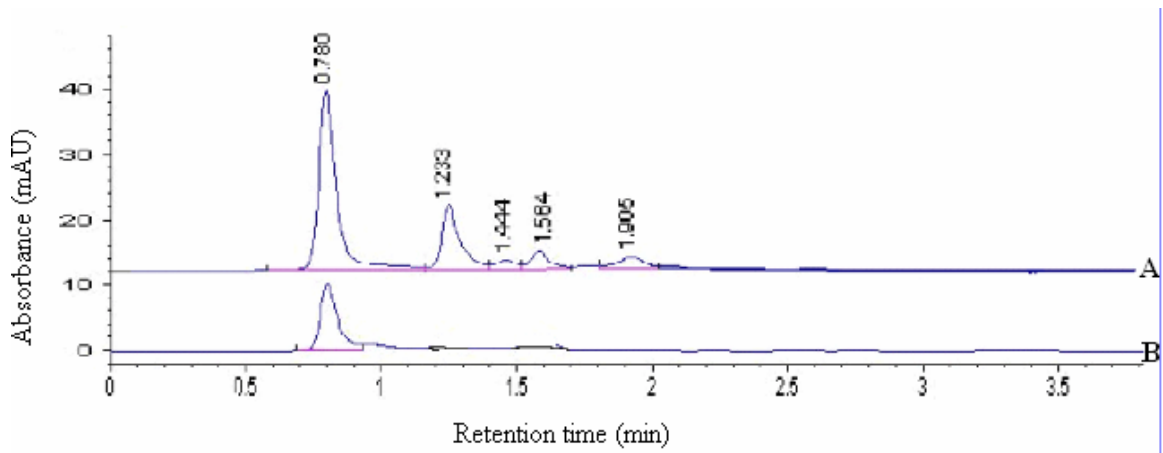
TLC/HPLC Details



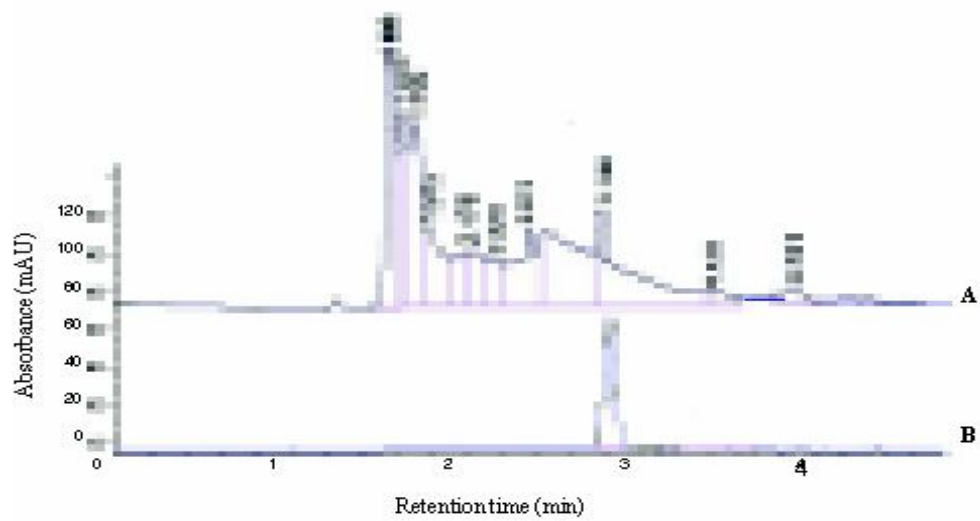
TLC details of test solution of *Jasminum auriculatum* leaf. **1-3:** Test solution; **4:** Malvalic acid standard.



TLC profile of test solution of *Jasminum auriculatum* flower. **1-3:** Test solution; **4:** Benzyl acetate standard.



HPLC chromatogram. **A.** Test solution of *Jasminum auriculatum* leaf **B.** Malvalic acid standard.



HPLC chromatogram. **A.** Test solution of *Jasminum auriculatum* flower; **B.** Benzyl acetate standard.