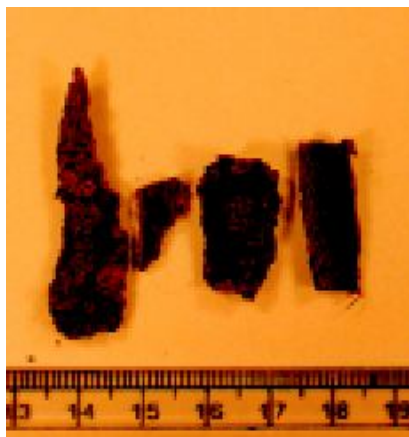


## 20 *Dendrophthoe falcata* (Linn.f.) Etting. (Vrkwadani)

Drug consists of dried stem bark of *Dendrophthoe falcata* (Linn.f.) Etting. (syn. *Loranthus longiflorus* Desr.) (Plate 20.1 A & B); Fam. Loranthaceae. It is a large woody branched parasite growing on a great variety of forest and fruit trees, and distributed almost throughout India, up to an altitude of 2400 m in hills.



A. Twig and flowering branch



B. Stem bark

Plate 20.1 *Dendrophthoe falcata* (Linn.f.) Etting.

### Chemical Constituents

#### Major

Quercitrin, quercetin.

