

20 *Nymphaea pubescens* Willd. (Kumuda)

Drug consists of dried longitudinally split fragments of flowers of *Nymphaea pubescens* Willd. (syn. *N. lotus* Linn. var. *pubescens* (Willd.) Hook.f. & Thoms.) (A & B); Fam. Nymphaeaceae. A perennial, aquatic, stoloniferous herb with white to reddish pink flowers; very common in ponds, streams and fresh water lakes of South India.



A. Flowering plant

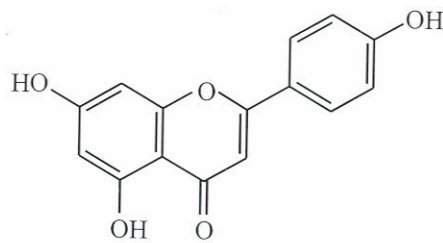
B. Dried flowers

Nymphaea pubescens Willd.

Chemical constituents

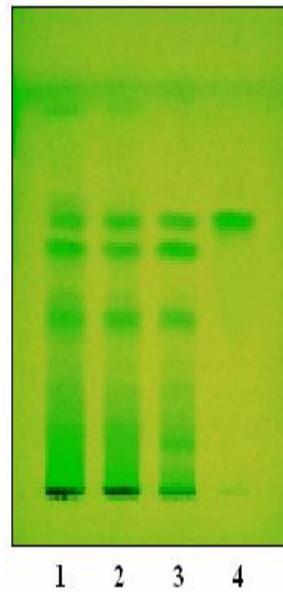
Major

Gallic acid, apigenin.

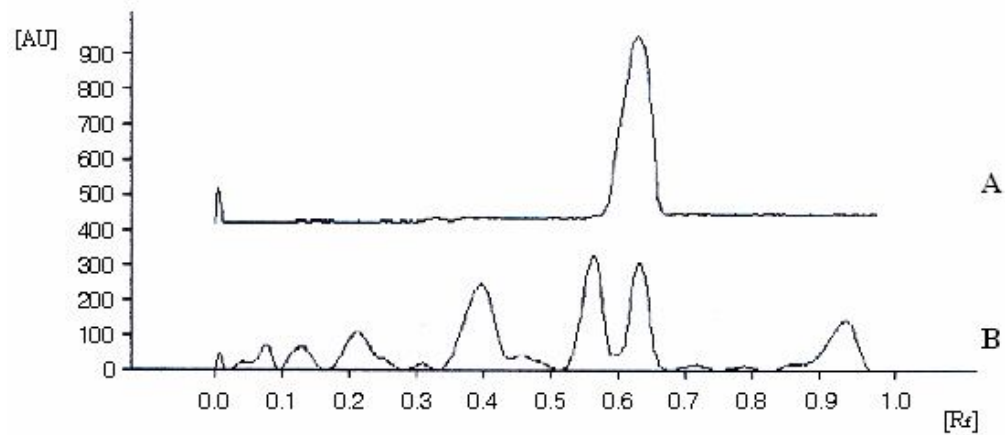


Apigenin

TLC/HPTLC Details



TLC profile of test solution of ethanol extract of *Nymphaea pubescens* flower. **1-3:** Test solution; **4:** Apigenin standard.



HPTLC densitometric scan at 254 nm. **A.** Apigenin standard; **B.** Test solution of ethanol extract of *Nymphaea pubescens* flower.