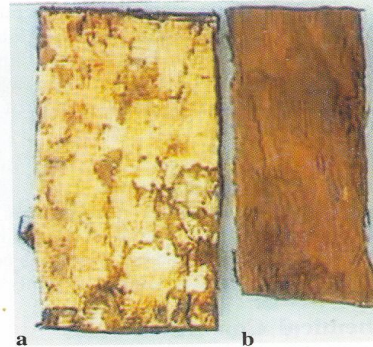


1 | *Albizia lebbek* (Linn.) Benth.
(Śirīṣa)

Drug consists of dried stem bark of *Albizia lebbek* (Linn.) Benth. (Plate 1.1 A & B); Fam. Fabaceae. A medium to large sized tree growing throughout India, up to 900 m, in lower Himalayas, and also in the Andamans.



A. Tree



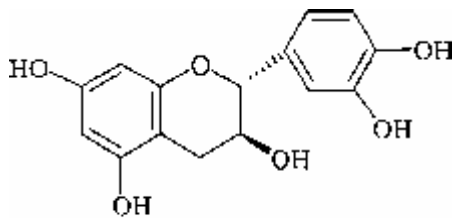
B. Stem bark
a. Outer surface b. Inner surface

Plate 1.1. *Albizia lebbek* (Linn.) Benth.

Chemical Constituents

Major

(+)-Catechin¹, saponins^{2,3,4,6}.



(+)-Catechin