

# 1 *Adhatoda beddomei* Clarke (Vasa)

Drug consists of dried leaf of *Adhatoda beddomei* Clarke (A & B); Fam. Acanthaceae. The plant is a shrub, 1 to 3 m in height rarely found in higher altitudes of Western Ghats of Kerala and Tamil Nadu, but often is under cultivation in Kerala and Tamil Nadu for its medicinal use.



A. A twig



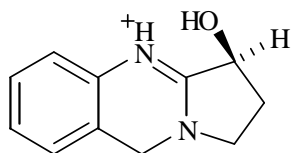
B. Dried leaves  
a. Upper surface b. Lower surface

*Adhatoda beddomei* Clarke

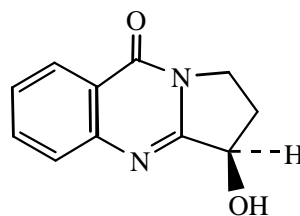
## Chemical Constituents

### Major

Vasicine and vasicinone.

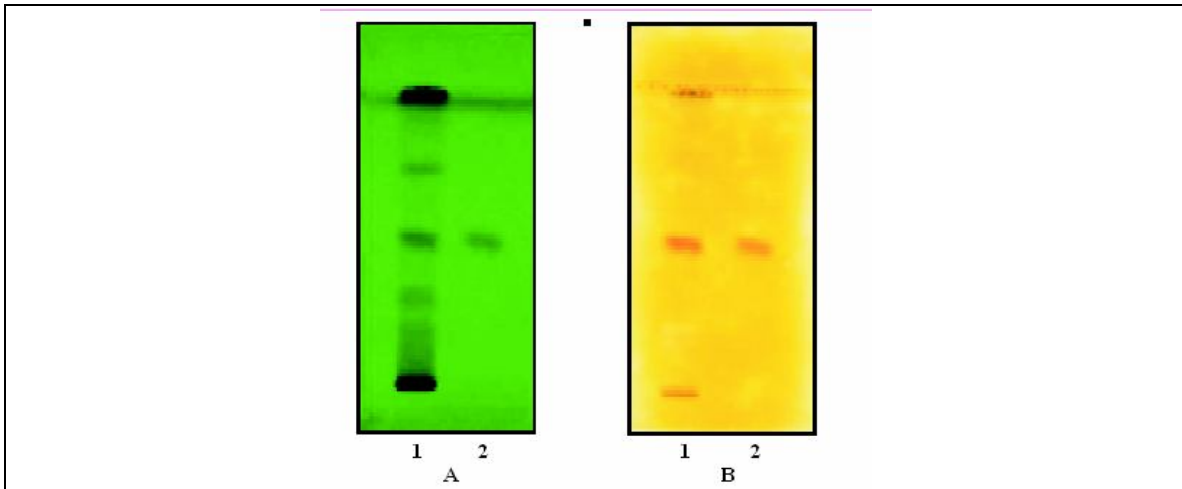


Vasicine

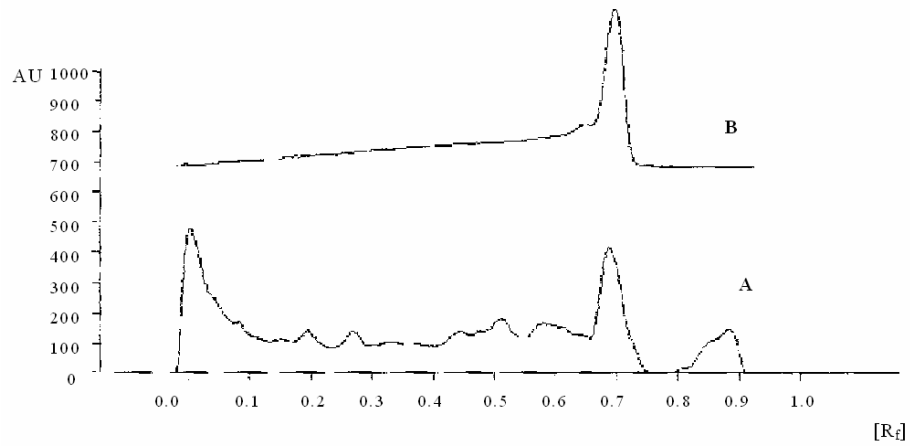


Vasicinone

## TLC/ GLC Details



TLC profile of test solution of *Adhatoda beddomei* leaf.  
A. UV 254 nm; B. Derivatized with Dragendorff's reagent.  
1: Test solution; 2: Vasicine standard.



TLC densitometric scan at 254 nm.  
A. Test solution of *Adhatoda beddomei* leaf; B. Vasicine standard.