

19 *Malaxis acuminata* D.Don (Jivakah)

Drug consists of dried pseudobulb of *Malaxis acuminata* D.Don (A, B & C) (syn. *Microstylis wallichii* Lindl.); Fam. Orchidaceae. It is about 10 to 25 cm, perennial herb, distributed in temperate and subtropical Himalayas, at an altitude of 1200 to 1700 m from Shimla to Sikkim, Anamalai hills in South India, Khasia hills and the Andamans¹.



A. Entire plant



B. Flowers



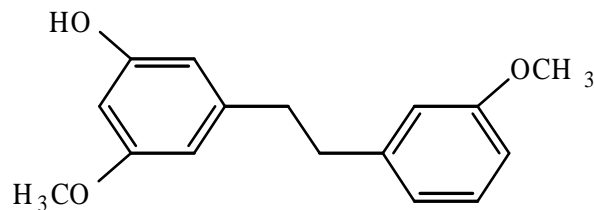
C. Dried pseudobulbs

Malaxis acuminata D.Don

Chemical Constituents

Major

3'-*O*-Methylbatatasin III.

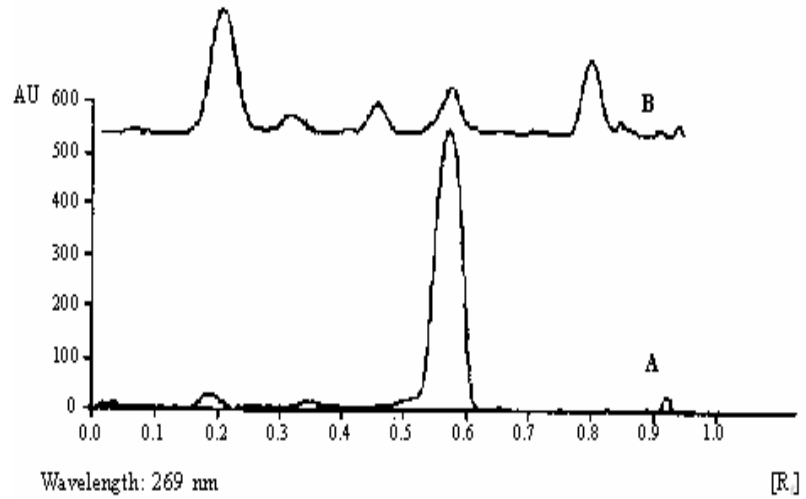


3-Hydroxy-3',5-dimethoxybiphenyl (3'-*O*-Methylbatatasin III)

TLC/ HPLC Details



TLC profile of test solution of *Malaxis acuminata* pseudobulb extract.
1: 3'-O-Methylbatatasin III standard;
2 : Test solution.



TLC densitometric scan at 269 nm.
A. 3'-O-Methylbatatasin III;
B. Test solution of *Malaxis acuminata* pseudobulb extract.