

19 *Ipomoea digitata* Linn.

(Kwiravidari)

Drug consists of the dried, transversely cut slices of the tuberous root of *Ipomoea digitata* Linn. (syn. *I. paniculata* R.Br., non Burm.) (A & B); Fam. Convolvulaceae. A perennial spreading handsome twining shrub with long petioled deeply palmate leaves, growing in moist areas from West Bengal and Assam to Sri Lanka.



A. A twig

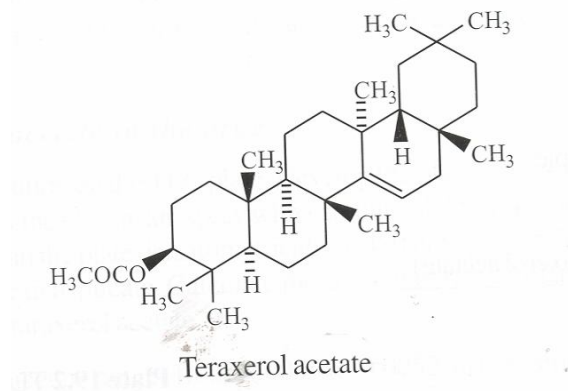


B. Dried pieces of tuber

Ipomoea digitata Linn.

Chemical Constituents

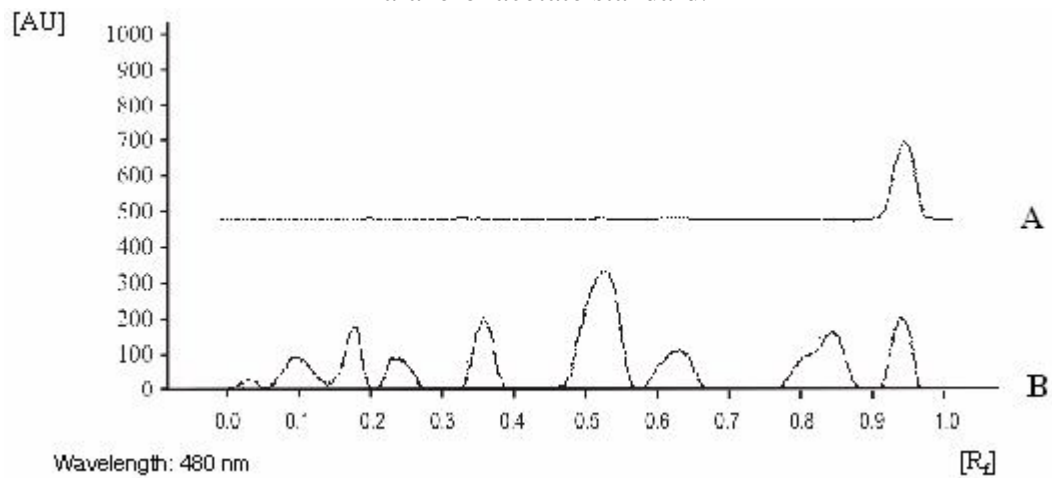
Taraxerol, taraxerol acetate; umbelliferone, scopoletin, scopolin; octadecyl (*E*)-*p*-coumarate, *n*-butyl- β -D-fructopyranoside; β -sitosterol, linoleic, linolenic, oleic, palmitic and stearic acids; a glycoside named 'paniculatin'.



TLC/HPTLC Details



TLC profile of ethanol extract of *Ipomoea digitata* tuberos root. **1-3:** Test solution; **4:** Taraxerol acetate standard.



HPTLC densitometric scan at 480 nm. **A.** Taraxerol acetate standard; **B.** Test solution of *Ipomoea digitata* tuberos root.