

19 *Nymphaea nouchali* Burm.f. (Nilotpala)

Drug consists of the longitudinally split, dried fragments of flowers of *Nymphaea nouchali* Burm.f. (syn. *N. stellata* Willd.) (A & B); Fam. Nymphaeaceae. A large, perennial aquatic herb with purplish blue flowers; generally found in tanks and ponds throughout the warmer parts of the country.



A. Flowering plant



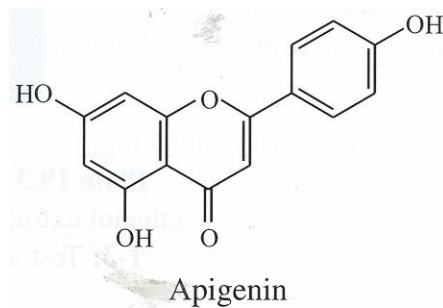
B. Dried flowers

Nymphaea nouchali Burm. f.

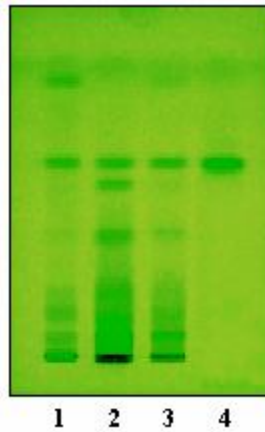
Chemical Constituents

Major

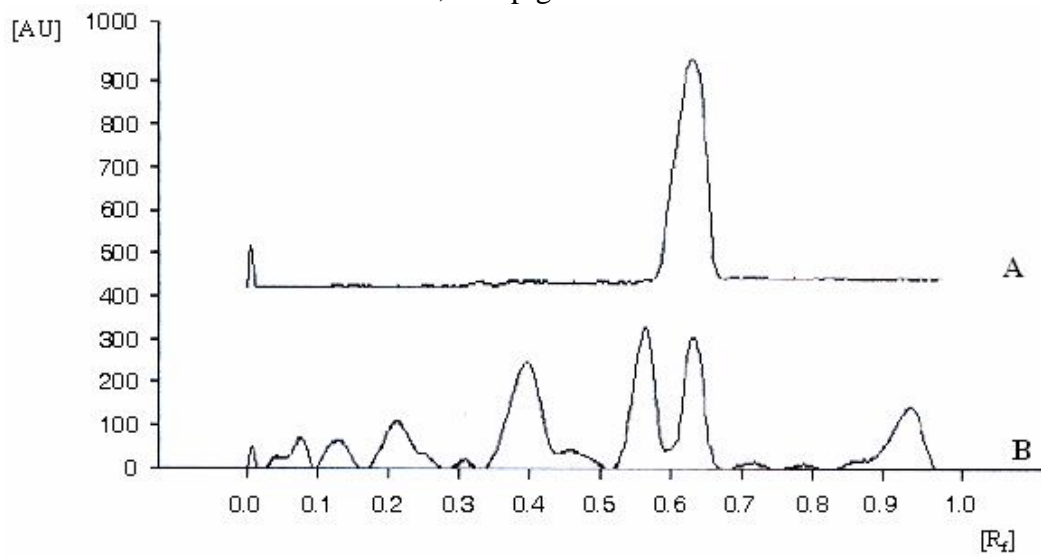
Apigenin.



TLC/HPTLC Details



TLC profile of test solution of ethanol extract of *Nymphaea nouchali* flower. **1-3:** Test solution; **4:** Apigenin standard.



HPTLC densitometric scan at 254 nm. **A.** Apigenin standard; **B.** Test solution of ethanol extract of *Nymphaea nouchali* flower.