

18 *Leucas cephalotes* (Roth) Spreng. (Droṣapuṃpi)

Drug consists of dried whole plant of *Leucas cephalotes* (Roth) Spreng. (A & B); Fam. Lamiaceae. A pubescent annual, 30 to 90 cm high, stem and branches obtusely angled, clothed with hairs. The plant is distributed throughout India, in plains.



A. Flowering twig



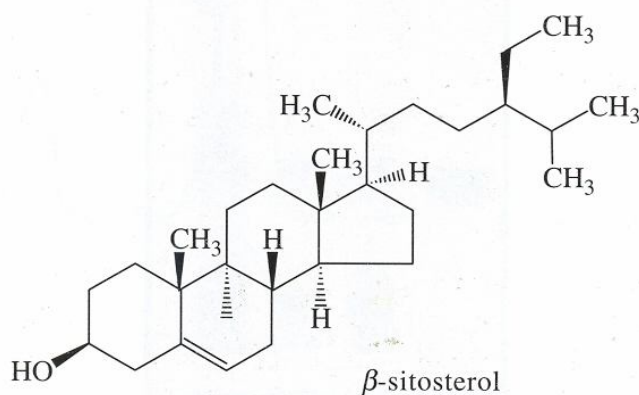
B. Root

Leucas cephalotes (Roth) Spreng.

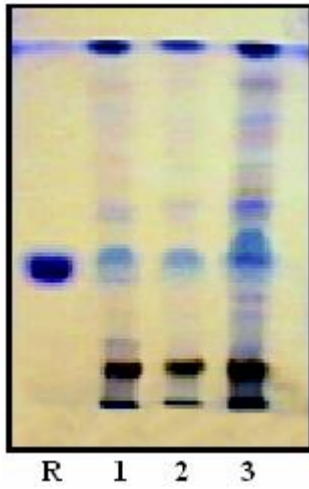
Chemical Constituents

Major

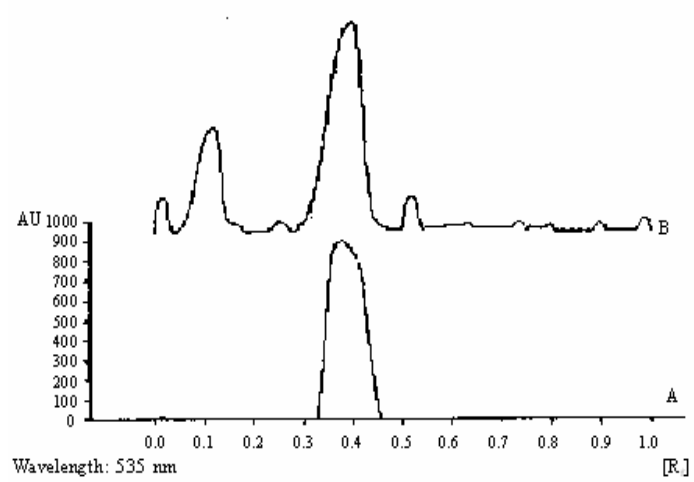
β -Sitosterol.



TLC/ HPLC Details



TLC profile of test solution of *Leucas cephalotes* whole plant extract.
R. : β -Sitosterol standard;
1-3: Test solution.



TLC densitometric scan at 535 nm.
A. β -Sitosterol standard;
B. Test solution of *Leucas cephalotes* whole plant extract.