

## 18 *Heracleum candicans* Wall. ex DC.

Drug consists of dried mature fruit of *Heracleum candicans* Wall. ex DC. (syn. *H. lanatum* Michx.; *H. nepalense* D. Don) (A, B, C & D); Fam. Apiaceae. A large herb up to 2.0 m high, hairy or densely pubescent, flowers pinkish-white, found in temperate grassy meadows of Himalayan regions and Tiriham valley.



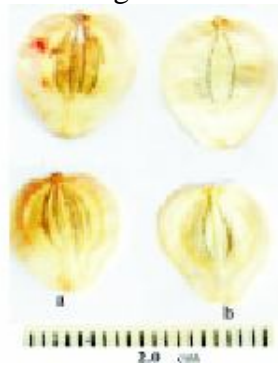
A. Flowering aerial twig



B. Fruiting branches



C. Dried fruits



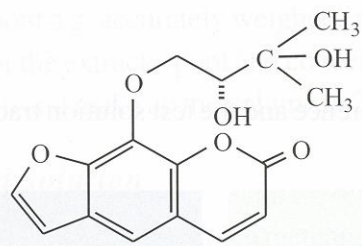
D. Enlarged mericarp  
a. Dorsal surface b. Ventral surface

*Heracleum candicans* Wall. ex DC.

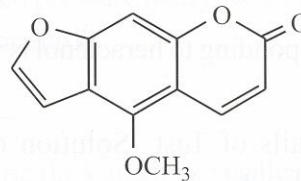
### Chemical Constituents

#### Major

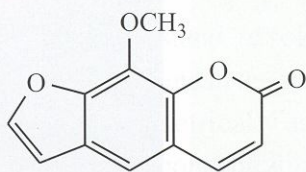
Heraclenol, bergapten, xanthotoxin, heraclenin.



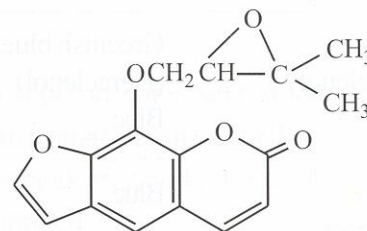
Heraclenol



Xanthotoxin

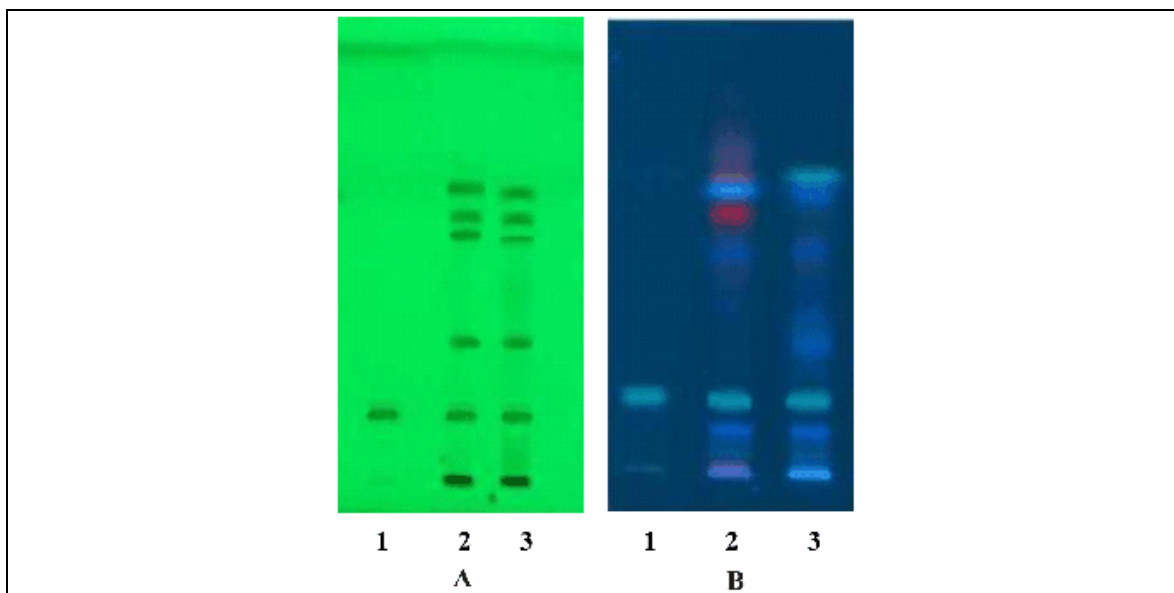


Bergapten

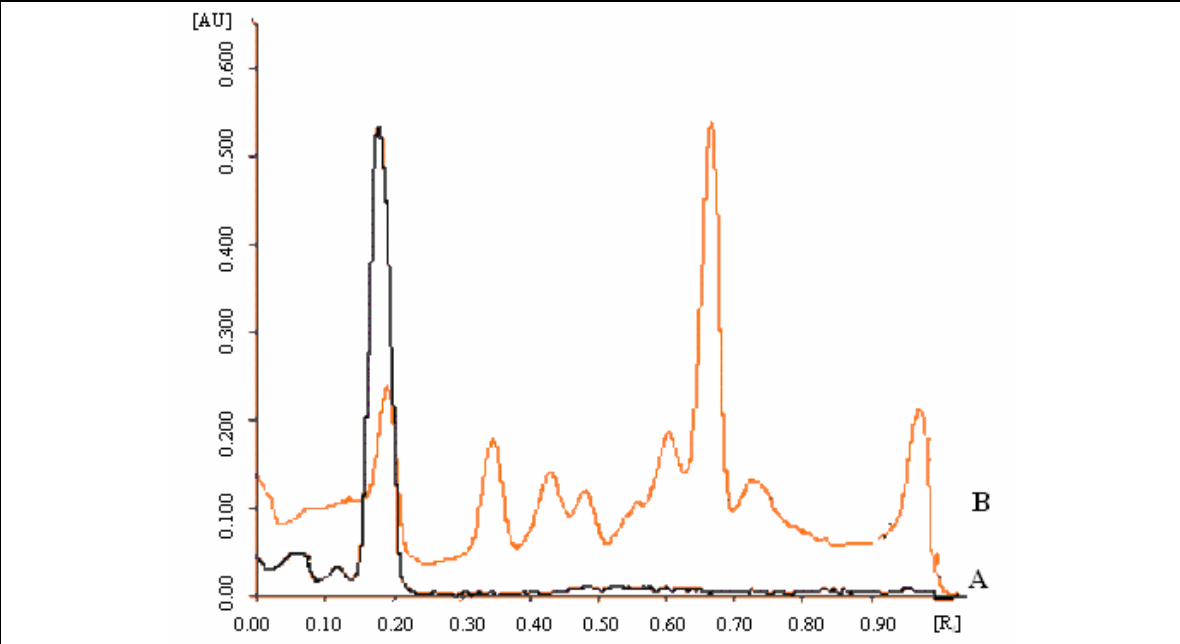


Heraclenin

### TLC/HPTLC Details



TLC profile of test solution of *Heraclium candicans* fruit. **A.** UV 254 nm; **B.** UV 36 nm.  
**1:** Heraclenol standard; **2-3:** Test solution.



HPTLC densitometric scan at 300 nm.

**A.** Heraclenol standard; **B.** Test solution of *Heracleum candicans* fruit.