

18 *Mallotus philippinensis* (Lamk.) Muell.-Arg. (Kampillaka)

Drug consists of the dried seed and trichome of the fruits of *Mallotus philippinensis* (Lamk.) Muell.-Arg. (A, B, C, D & E); Fam. Euphorbiaceae. A small much branched evergreen tree; found up to an altitude of 1500 m in the patches of evergreen and deciduous forests all over India.



A. Tree



B. Fruiting leafy twig



C. Twig with seeds & dehiscing fruits



D. Seeds



E. Kamala powder

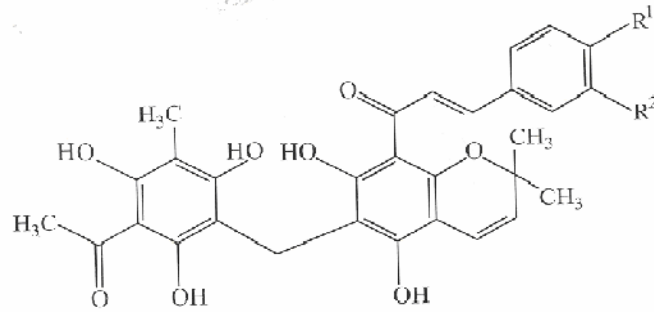
Mallotus philippinensis (Lamk.) Muell.- Arg.

Chemical Constituents

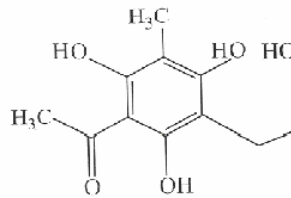
Major

Rottlerin, 4-hydroxyrottlerin, 3,4-dihydroxyrottlerin. Mallotophilippen A and B, mallotophilippen C, D and E; 3'-prenylrubranine, mallotus-A, 2',4'-dihydroxy-6'-

methoxy-3'-prenylchalcone, 5,7-dihydroxy-6-methyl-8-prenylflavanone, mallotus-B; kamalachalcone A and B; C-methylated cinnamoyl chromen, chromen.

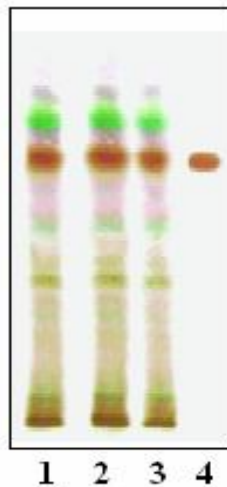


Rottlerin $R^1=R^2=H$
 4-Hydroxyrottlerin $R^1=H; R^2=OH$
 3, 4-Dihydroxyrottlerin $R^1=R^2=OH$

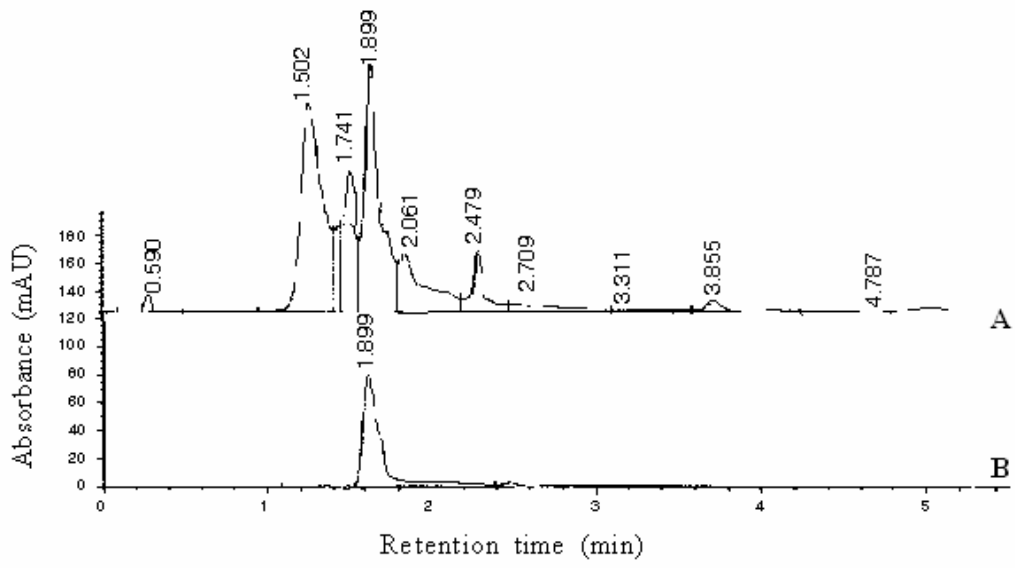


Mallotophilippen A

TLC/HPLC Details



TLC profile of test solution of ethanol extract of *Mallotus philippinensis* seed and trichome. **1-3:** Test solution; **4:** Rottlerin standard.



HPLC chromatogram. **A.** Test solution of ethanol extract of *Mallotus philippinensis* seed and trichome; **B.** Rottlerin standard.