

17 *Hypericum perforatum* Linn. (Basant)

Drug consists of dried aerial parts of *Hypericum perforatum* Linn. (A & B); Fam. Hypericaceae. A glabrous, perennial herb with woody branches found in temperate Western Himalaya from Kashmir to Uttranchal up to an altitude of 3000 m.



A. Aerial branch



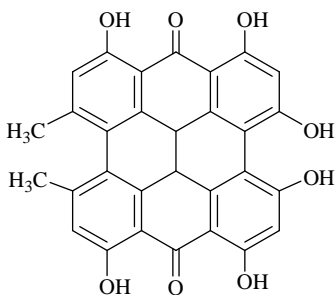
B. Dried aerial parts

Hypericum perforatum Linn.

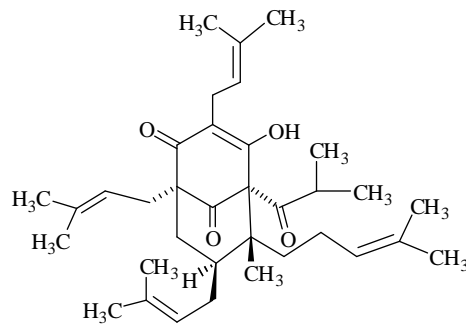
Chemical Constituents

Major

The aerial parts of the plant contain naphthodianthrone: hypericin, pseudohypericin, flavonoids: quercetin, quercitrin, hyperoside isoquercetin, rutin and phloroglucinol: hyperforin.

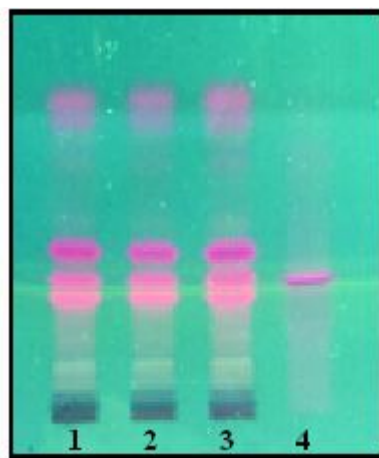


Hypericin



Hyperforin

TLC/ HPLC Details



TLC profile of test solution of *Hypericum perforatum* aerial parts.
1-3 : Test solution; 4 : Hypericin standard.