

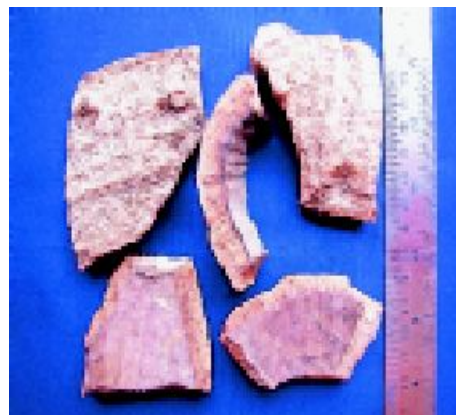
17 *Gmelina arborea* Roxb.

(Gambhari)

Drug consists of dried stem bark of *Gmelina arborea* Roxb. (A & B); Fam. Verbenaceae. It is a medium sized to rarely large deciduous tree attaining a height of 15-20 m, distributed in the deciduous forests, in lower Himalayas, Nilgiris and the East and West coasts of India.



A. A twig with fruits



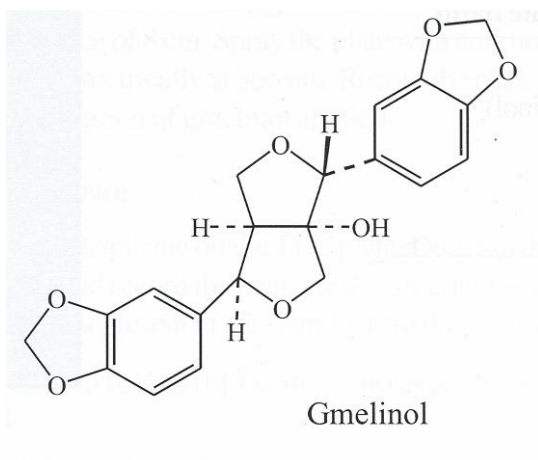
B. Bark pieces showing outer and inner surfaces

Gmelina arborea Roxb.

Chemical Constituents

Major

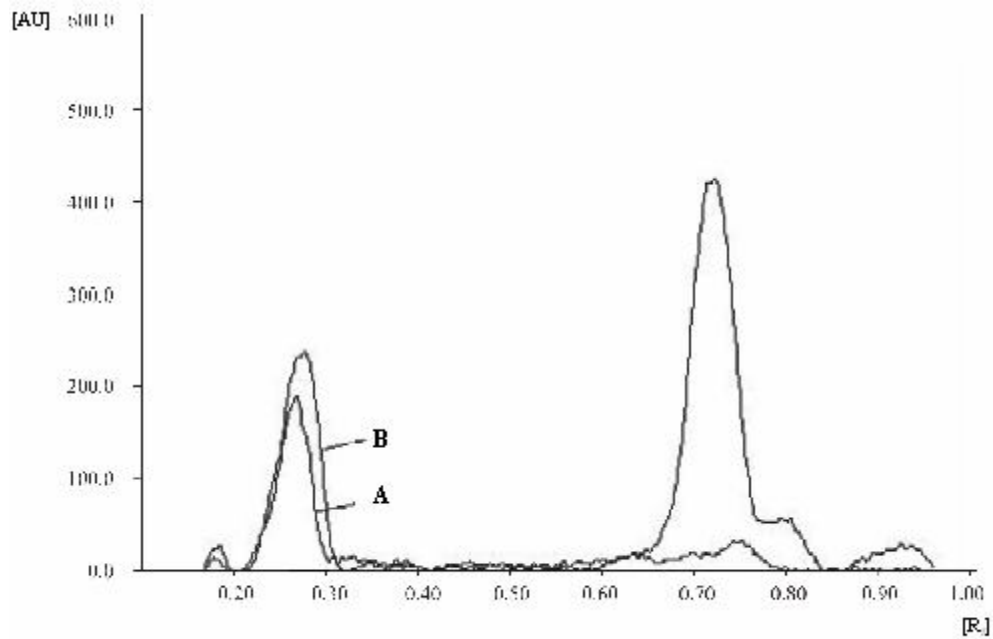
Gmelinol.



TLC/HPTLC Details



TLC profile of chloroform extract of *Gmelina arborea* bark. **1-2:** Test solution; **3:** Gmelinol standard.



HPTLC densitometric scan at 365 nm. **A.** Gmelinol standard; **B.** Test solution of *Gmelina arborea* bark.