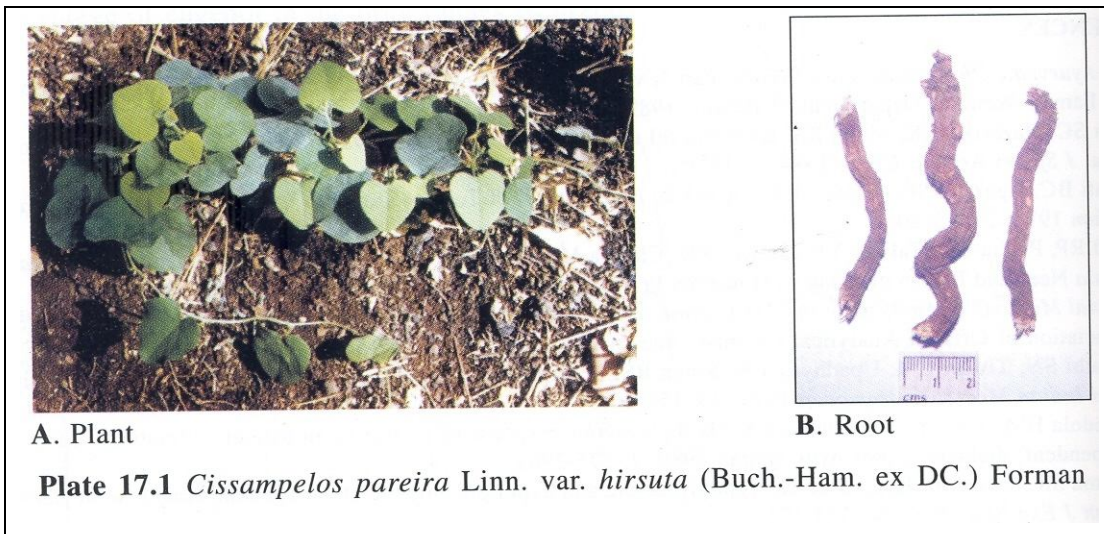


17 *Cissampelos pareira* Linn. var. *hirsute* (Buch.-Ham. ex DC.) Forman (Patha)

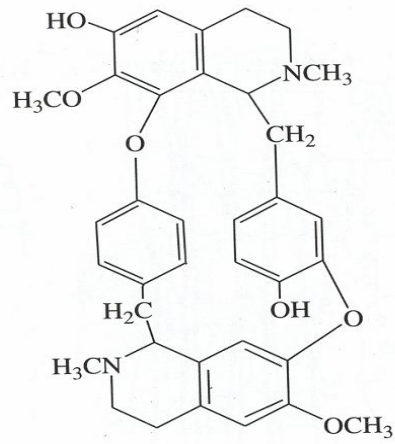
The drug consists of dried root of *Cissampelos pareira* Linn. var. *hirsute* (Buch.-Ham. ex DC.) Forman (syn. *C. pareira* sensu Hook.f., p.p.) (Plate 17.1 A & B); Fam. Menispermaceae. The plant is a perennial climbing shrub distributed throughout India up to an altitude of 2000 m.



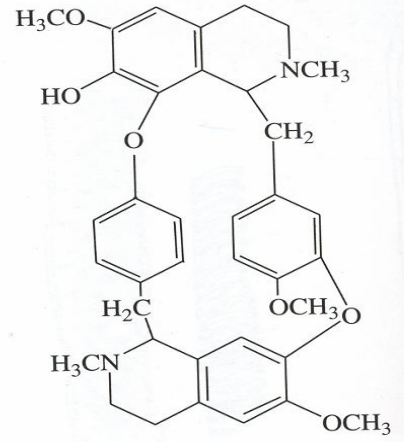
Chemical Constituents

Major

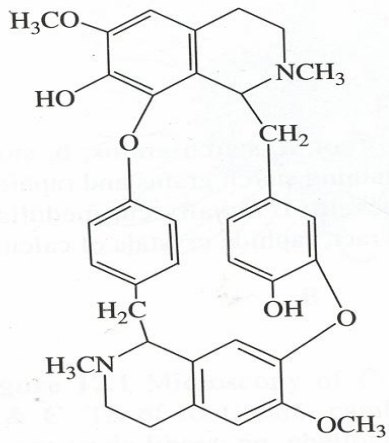
Hayatin [(±)-bebeerine, (±)-curine, chondrocurine], hayatinin[(-)-4''-*O*-methylbebeerine, (-)-4''-*O*-methylcurine], hayatidine [(±)-4''-*O*-methylbebeerine, (±)-4''-*O*-methylcurine], (+)-4''-*O*-methylcurine [(±)-4''-*O*-methylbebeerine], 1-bebeerine [(-)-curine, pelosine, cissampeline], isochondrodendrine, menismine, pareirine, cyclanoline (cissamine), cycleanine, dehydrodicentrine, dicentrine, insularine, (++)-4''-*O*-methylcurine, cissampareine, norimeluteine, norruffscine, pareirubrines A and B, grandirubrine, isoimerubrine.



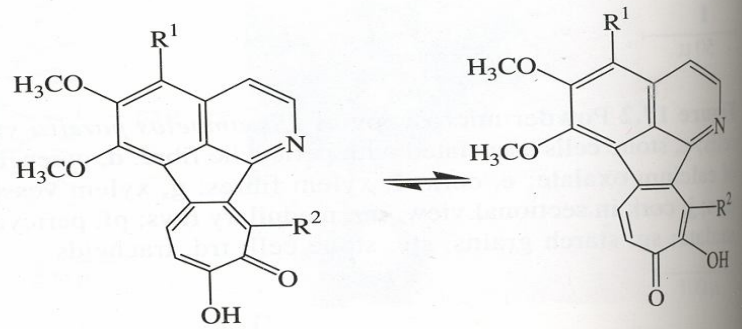
Hayatin (chondrocurine)



Hayatinin



Bebeerine



Pareirubrine A $R^1 = R^2 = OCH_3$
 Pareirubrine B $R^1 = R^2 = H$