

## 17 *Kaempferia galanga* Linn.

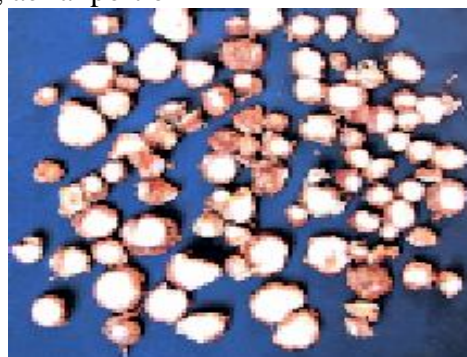
Drug consists of dried, transversely sliced rhizome of *Kaempferia galanga* Linn. (A, B & C); Fam. Zingiberaceae. It is a geophilous, glabrous, perennial, aromatic herb found under cultivation throughout the country and is sometimes found in the wild condition in plains, especially in shady areas in the forests. The plant has very fragrant, tuberous rhizome.



A. Flowering aerial portion



B. Entire young plant



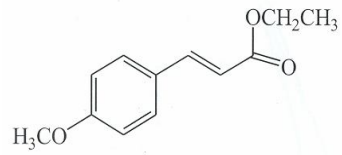
C. Dried transversely cut pieces of rhizome

*Kaempferia galanga* Linn.

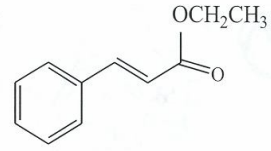
### Chemical Constituents

#### *Major*

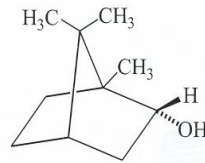
Ethyl *p*-methoxycinnamate, ethyl cinnamate, *n*-pentadecane,  $\delta$ -car-3-ene, borneol; volatile oil.



Ethyl *p*-methoxycinnamate

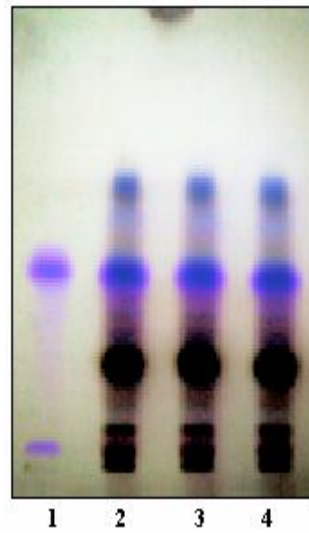


Ethyl cinnamate

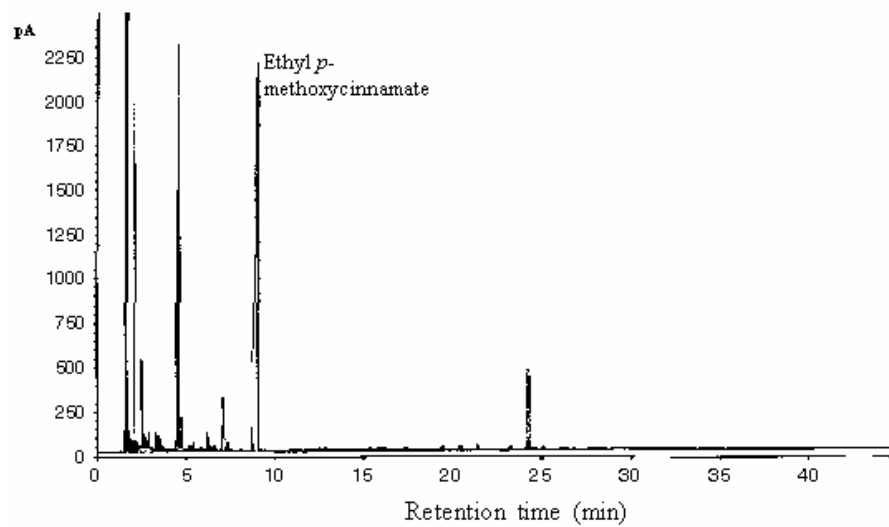


Borneol

### TLC/GLC Details



TLC profile of test solution of *n*-hexane extract of *Kaempferia galanga* rhizome. **1:** Ethyl *p*-methoxycinnamate standard; **2-4:** Test solution.



GLC fingerprint profile of essential oil of *Kaempferia galanga* rhizome along with 1,8-cineole and ethyl *p*-methoxycinnamate as reference.