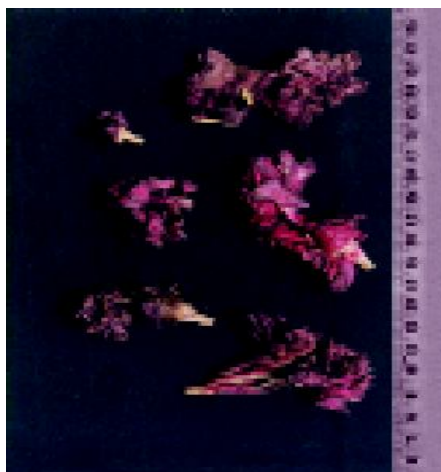


16 *Hibiscus rosa-sinensis* Linn. (Japakusum)

Drug consists of dried flower of *Hibiscus rosa-sinensis* Linn. (A & B); Fam. Malvaceae. It is a conspicuous, ornamental, evergreen, glabrous, showy, 1.5 to 2.4 m high shrub cultivated throughout India up to 1200 m in the hills.



A. Flowering branch



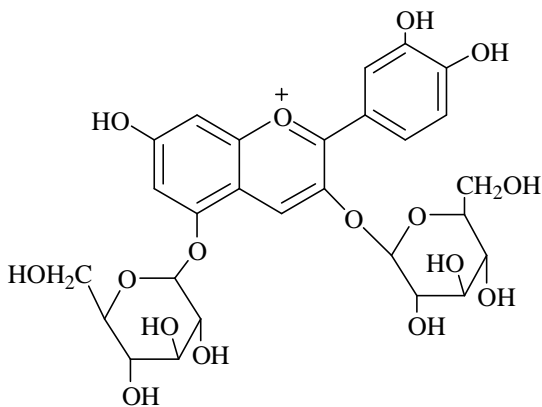
B. Dried flowers

Hibiscus rosa-sinensis Linn.

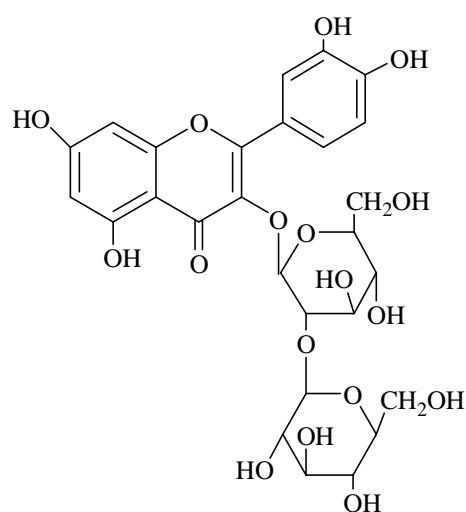
Chemical Constituents

Major

Anthocyanins and flavonoids; cyanidin-3,5-diglucoside, cyanidin-3-sophoroside-5-glucoside, quercetin-3,7-diglucoside, quercetin-3-diglucoside.

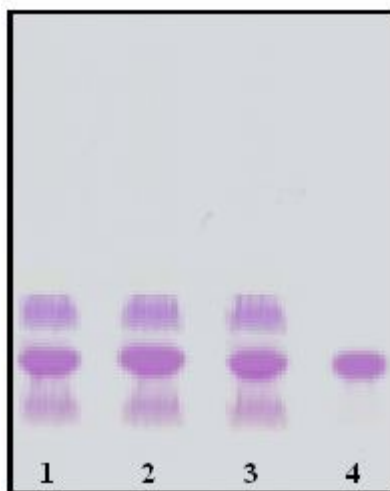


Cyanidin-3, 5-diglucoside



Quercetin-3-diglucoside

TLC/ HPLC Details



TLC profile of test solution of
Hibiscus rosa-sinensis flower extract.

1-3 : Test solution;

4 : Cyanidin-3,5-diglucoside standard.